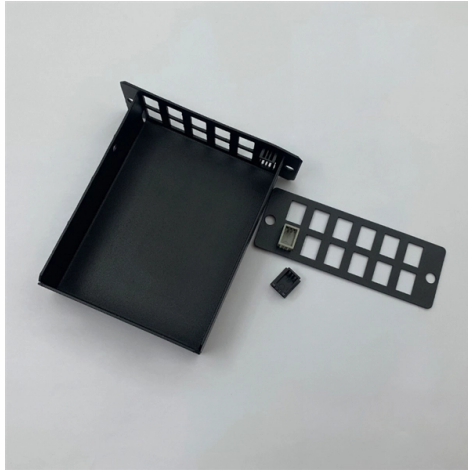


Advantages of Industrial Switches in Ghana



Overview

Beyond the core features, many Ghana switches offer added advantages such as built-in LED indicators, modular designs for easy replacement, and compatibility with smart control systems. Some variants include lockable mechanisms for enhanced safety in critical applications. Industrial switches are networking devices that allow devices to collaborate seamlessly within a ruggedised setting. Although versatile, the industrial switch primarily joins Programmable Logic. Let's take a look at the advantages that make industrial switches essential in today's connected automation world. It plays a vital role in rail transit, intelligent manufacturing and industrial automation control system. With the continuous improvement of industrial automation, the. The Ghanaian market for electrical SWITCH (HS Code 8536500000) has shown dynamic activity in the first half of 2025, highlighting the country's growing demand for infrastructure and industrial equipment. According to trade intelligence from NBD DATA, Ghana imported a diverse range of switch. Industrial switches, also known as industrial Ethernet switches, were developed to meet the specific requirements of industrial networks, which were not originally considered in the design of standard Ethernet.

Article Content

Industrial Switch / What are the advantages of Industrial

The Industrial POE Switch is the ideal solution for powering remote devices such as IP phones, video cameras, wireless access points, alarms, traffic

Key Trends and Insights in Ghana's Industrial Sector

The industrial sector in Ghana has been experiencing significant growth and transformation over the past few years. This article explores the key

Advantages and disadvantages of Switch

Learning the capacity of switch-based circuits while you find out about strong state rationale entryways makes the two points simpler to handle, and makes way for an improved

The Science Behind Ghana Switch: Properties, Production, and

Beyond the core features, many Ghana switches offer added advantages such as built-in LED indicators, modular designs for easy replacement, and compatibility with smart control systems.

What are the advantages of the Industrial Switch over standard

What is Industrial Switch? Ethernet switch is a common network device, and Industrial Switch is an Ethernet switch with industrial characteristics plays a vital role in rail transit, intelligent

Comprehensive Analysis of Industrial Switches

Comprehensive Analysis of Industrial Switches: An In-Depth Guide to Types, Pros and Cons, and Application Scenarios In the wave of the Industrial Internet, industrial switches, serving as

Switches in Industrial Automation | RJS Electronics Ltd

Discover the crucial role of switches in industrial automation. Learn how switches enable control & monitoring of circuits for optimal productivity and safety.

Industrial Switches for Modern Manufacturing and

Discover how industrial switches support modern manufacturing and automation with durability, flexibility, quality of service, and robust cybersecurity.

Industrial Switches Benefits For Manufacturing Efficiency

This article will discuss the role of industrial switches in facilitating efficiency in manufacturing and the importance of these switches in contemporary industrial setups.

Industrial Switches in Industrial Automation

This article explains all you need to know about industrial automation, including requirements, roles, and cases of industrial switches for industrial automation networks.

Application scenarios of industrial switches in multiple industries

As a bridge connecting industrial equipment and networks, industrial switches play a vital role in many industries due to their high reliability, high bandwidth, and strong network management capabilities.

Choosing the Right Industrial Switch for 2025

Discover the best types of industrial switches for harsh environments & smart operations in 2025. Learn key features, and advantages, and how to select

Analyzing Ghana's Switch Import Market: Top Buyers, Suppliers, and ...

This article analyzes key buyers, major suppliers, and regional trade patterns, offering insights into industrial and consumer demand trends shaping the Ghanaian electrical switch market.

The role of industrial switches in the energy industry

At the same time, industrial switches also play an indispensable role in data exchange of substation automation equipment, real-time communication of

Top Four Advantages of Using Industrial Switch in Factories

Industrial switches are networking devices that allow devices to collaborate seamlessly within a ruggedised setting. Without internal fans, these switches prevent dust and metal fillings from

What are the advantages of the Industrial Switch over standard

In summary, relative to a standard Ethernet switch, Industrial Switch has higher reliability, stability, security and compatibility in the field of intelligent transportation and industrial

7 manufacturers for Automatic Transfer Switch in Ghana

In summary, staying informed about regulations, market dynamics, and technological trends is essential for anyone interested in the ATS industry in Ghana.

Low Voltage Electrical Panels and Control Systems

Discover ESL Ghana's expertise in crafting low voltage electrical panels and control systems customized for industrial and commercial applications.

What are the 5 common advantages of industrial switches?

Industrial switches generally use aluminum alloy shells, which have better heat dissipation and stronger protection. They can basically work normally in the temperature range of -45°C to +85°C, and can

Ghana's Manufacturing Sector Report 01.11.22 (FINAL).pptx

The Sekondi Industrial Park is located in Sekondi-Takoradi, Ghana's second largest port city. The Industrial park covers a total area of of 2,200 acres (890.30 hectares).

Electrical switchgear systems in Ghana

Electrical switchgear systems in Ghana are used in both low-voltage and medium-voltage distribution networks for efficient management. They assist in controlling the flow of electricity and allow utilities

FS Community

Hier sollte eine Beschreibung angezeigt werden, diese Seite lässt dies jedoch nicht zu.

Industrial Switch: Advantages and Different Types

The Advantages of Industrial Ethernet Switches Adapt to Wide Temperature Environment An industrial switch is built specifically to withstand wide swings in temperature as well extreme weather

Industrial switch and its advantages

By choosing industrial switches certified by relevant regulatory bodies, you can reduce the risk of non-compliance and demonstrate your commitment to quality

How Industrial-Grade Switches Enhance Safety and

Industrial environments demand high-performance, reliable, and durable switches to ensure worker safety, operational efficiency, and long-term

Industrial Switches Explained: How They Power Modern

Unlike a standard office switch, industrial-grade types can withstand extreme heat, dust, vibrations, and instances of electrical surge from the production

What are the benefits of industrial switches?

Industrial switches offer advantages over regular commercial switches due to their ability to withstand harsh working environments, a wide range of product options, and flexible port

How Industrial-Grade Switches Enhance Safety and

The Critical Role of Switches in Industrial Settings Industrial environments demand high-performance, reliable, and durable switches to

Understanding the Role of an Industrial Network Switch

Explore the essential role of industrial network switches in modern infrastructure. Discover unmanaged and managed Ethernet switch solutions,

Contact Us

For more information, pricing, or custom solutions, please contact us:

Website: <https://www.buglerdental.co.za>

Email: sales@buglerdental.co.za

Phone: +27 71 549 2836

Address: 22 Impala Crescent, Waterfall Business Estate, Midrand, 1685, South Africa

This document is for informational purposes only. Specifications subject to change without notice.

