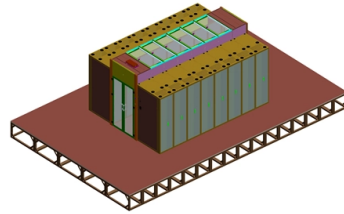


Core Switch 5730



Overview

The S5730-48C-PWR-SI-AC is a PoE switch. It has two power module slots, each of which can have a 500 W or 650 W power module installed. To restore the factory settings and reset the switch, hold down the button for at least 6 seconds. The S5730-SI series switches are next-generation standard gigabit Layer 3 Ethernet switches. Huawei's S5730-SI series switches (S5730-SI for short) are next-generation standard gigabit Layer 3 Ethernet switches that provide flexible full gigabit access and cost-effective fixed GE ports and 10 GE uplink ports, meanwhile can provide 40 GE uplink ports with an interface card. The switches are developed based on Huawei Versatile Routing Platform (VRP) to implement software de inition and service change on demand. Built on next-generation high-performance processors and.

Article Content

CISCO SWITCH CATALYST 3650 SERIES DATA SHEET

The S5730-SI supports simplified Operations and Maintenance (O& M), intelligent Stack (iStack), flexible Ethernet networking. It also provides enhanced Layer 3 features and mature IPv6 features. The

HUAWEI S5700/S5710/S5720/S5730 Series Switches

Huawei S5700 series Ethernet switches are next-generation energy-saving switches designed to provide high-bandwidth access and Ethernet multi-service aggregation. Based on cutting-edge hardware and

Level switch Four point level meter Model 5711, 5712, 5730

Fig.: Left: 5711, level switch with rail mounted enclosure Right: 5730, level meter (four switch points) Model 5711 has a single setpoint with 1 DPDT relay output with fixed narrow deadband and

S5730-SI Series Standard Gigabit Ethernet Switches

The S5730-SI series switches provide powerful aggregation and routing capabilities and can be used as core switches on a small-sized enterprise campus network. The S5730-SI series switches use iStack

Huawei S5730-SI Series Switches Product Datasheet

The S5730-SI series switches (S5730-SI for short) are next-generation standard gigabit Layer 3 Ethernet switches that provide flexible full gigabit access and cost-effective fixed GE/10 GE ports and

S5730-48C-PWR-SI-AC

Version Mapping Table 4-678 lists the mapping between the S5730-48C-PWR-SI-AC chassis and software versions.

Layer 3 Core Switch 5730-48c-si-ac Standard Ethernet Switch Of ...

The S5730-SI series switches (S5730-SI for short) are next-generation standard gigabit Layer 3 Ethernet switches. They can be used as an access or aggregation switch on a campus network or as

Microsoft Word

Each Fluke product is warranted to be free from defects in material and workmanship under normal use and service. The warranty period is one year and begins on the date of shipment. Parts, product

Huawei S5730 Switches Angebot und Hilfe

Thunder-link bietet Original-Switches der S5730-Serie von Huawei, stellt Datenblätter für Switches der S5730-Serie von Huawei bereit und gibt Großhandelspreise für Switches der S5730-Serie für

Datenblatt und Preis für Huawei Switches der S5730-Serie

Der Huawei S5730-SI ist ein leistungsstarker Ethernet-Switch für Unternehmensnetzwerke. Er bietet zahlreiche Funktionen, darunter hohe Portdichte, erweiterte QoS und robuste Sicherheit. Ideal für

Cisco Router, Cisco Switch, New Used Cisco Prices Comparison

Huawei S5730-SI Series Switches vs. S5730-HI Series Switches S5730-SI Series Huawei's S5730-SI series switches (S5730-SI for short) are next-generation standard gigabit Layer 3 Et

S5730-60C-HI-48S (02351XFS) Datasheet

Overview expansion slot, without slots for uplink interface extension. The switches are developed based on Huawei Versatile Routing Platform (VRP) to implement software de inition and service change on

Theory of Operation. Fluke 5730A, 5730A Multifunction Calibrator

Download the Fluke 5730A Multifunction Calibrator Service Manual for detailed specifications, theory of operation, calibration procedures, and verification procedures.

Huawei S5730-HI Series Next-Generation Gigabit Agile

As shown in the following figure, the S5730-HI switches are located at the access/core layer to build a high-performance, reliable enterprise campus

Info-Finder (DatacomMate): One-stop intelligent platform for product ...

This tool helps you calculate the maximum length of cables for connecting the central switch to an RU or AP on a network with the simplified architecture in level-1 and level-2 power supply scenarios. Obtain

Huawei S5730 Series Switch Datasheet & Price

The Huawei S5730-SI is a high-performance Ethernet switch designed for enterprise networks. It offers a wide range of features, including high port density, advanced QoS, and robust security. Ideal for

S5730-48C-PWR-SI-AC

You can connect a switch to a configuration terminal or network management workstation through the ETH management port to configure the switch locally or remotely.

S5730 Switch

The following table summarizes the core hardware parameters and performance metrics for the S5730 series. All values are measured under typical operating conditions with the ...

S5700 Series Switches Hardware Description (V200)

S5700 Series Switches Hardware Description (V200) S5730-SI S5730-48C-SI-AC S5730-48C-PWR-SI-AC S5730-68C-SI-AC S5730-68C-PWR-SI-AC S5730-68C-PWR-SI Translation

Huawei S5730-SI Series Switches Product Datasheet

Huawei S5730-SI Series Switches Product Datasheet S5730-SI Series Switches Introduction Huawei S5700 series Ethernet switches (S5700 for short) are next-generation energy-saving Gigabit

What If I Forget the Passwords of S200, S1700, and S5700 Switches

What If I Forget the Passwords of S200, S1700, and S5700 Switches (V200) Have you ever forgotten the S5700 switch passwords? Have you ever failed to log in to your switch because of a lost login

Huawei S5730-HI Series Next-Generation Gigabit Agile

The S5730-HI series switches are the best choices for the access or aggregation layer of medium- or large-sized campus networks, and the core layer of branch or

HUAWEI S5700/S5710/S5720/S5730 Series Switches

With powerful aggregation and routing capabilities of S5700 switches make them suitable for use as core switches in a small-scale enterprise network, as shown in Figure 1.

Contact Us

For more information, pricing, or custom solutions, please contact us:

Website: <https://www.buglerdental.co.za>

Email: sales@buglerdental.co.za

Phone: +27 71 549 2836

Address: 22 Impala Crescent, Waterfall Business Estate, Midrand, 1685, South Africa

This document is for informational purposes only. Specifications subject to change without notice.

