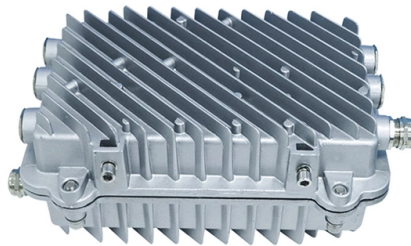


# Core Switch Layer 3 16 Optical



## Overview

TJ1600 Core Switch is one of the world's largest disaggregated multi-terabit optical switches designed for building high-capacity optical backbone networks, 5G core networks and interconnecting hyper-scale datacenters. The unique leaf-spine architecture supports dynamic capacity scaling using the. The Cisco Catalyst™ 9500 Series, including the Catalyst 9500X models, continues to shape the future with continued innovation that helps you reimagine connections, reinforce security and redefine the experience for your hybrid workforce big and small. Cisco Catalyst 9500 Series Switches, based on. Passive Optical Networking Support Core Switch + OLT 2-in-1 for Flexible Networking 10G Uplink 6 kV Surge Protection, Reducing the Risk of Port Damage Free Layer 3 Cloud Management. PLANET CS-6306R Core Layer Routing Switch is specially designed for large network applications such as enterprises, campuses, communities, ISPs and data center networks where flexible configuration, large capacity, high density, high reliability and advanced traffic management are required. The. L3 managed Ethernet fiber switch with 12\*10/100/1000M RJ45 ports and 4\*1/10G uplink SFP+ fiber ports. Built-in 30W power supply and 1U/19" cabinet mount.

## Article Content

RG-NBF5200M-8FS16GT4XS, e-Lighten Layer 3 Managed Switch

RG-NBF5200M-8FS16GT4XS, e-Lighten Layer 3 Managed Switch Hotel, Resort, Villa, Apartment, Factory, Enterprise, Education, etc.

DS-3E7800 Series

Product overview The DS-3E7800 series switch is designed for the next-generation enterprise core networks. It adopts modular design, uses proprietary operating system and provides the following

RG-S5310-48SFP4XS-E, 48-Port GE Optical Layer 3 Managed Access Switch

RG-S5310-48SFP4XS-E, 48-Port GE Optical Layer 3 Managed Access Switch Full Gigabit Ethernet Access Switch for Large-sized Networks

24 x 10G SFP + 4 x 100G QSFP28 Optical L3 Manage

This switch features a modular power supply design for a high availability architecture. The hot-swappable design means that power supplies can be

Cisco Catalyst 9300 Series Switches

Cisco Catalyst 9300 Series Switches are built for security, IoT, and the cloud. Build a secure foundation that unlocks automation, simplicity, and insights.

Fibre Optic Active PoE Industrial Switch 16-Port 10G L3 Managed Core

Briticom® 10G L3 Industrial PoE Switch uses top-rated 10G network switching chip, multiple layers PCB design, as well as self-developed switch soft-ware system.

CS-34816XG - 16 Port SFP Gigabit + 8 Combo Gigabit Ports

CERIO CS-3000 Series Model : CS-34816XG is the latest powerful high-performance L2/L3 Lite Fiber Optical Switch, It built-in web-browser management interface allows the administrator to manage and

24\*10G SFP+ and 2\*100G WFSP Optical Core Switch

WS6024-2QF 10Gb managed switch is a high performance full 10Gb\*24 access and 40/100G\*2 uplink core routing Layer 3 managed switch developed by WayOS.

Cisco Catalyst 9500 Series Switches Data Sheet

Based on an x86 CPU, the Cisco Catalyst 9500 Series is Cisco's lead purpose-built fixed core and aggregation enterprise switching platform, built for

How to Choose the Suitable Number of Fiber Cores for

Future Scalability One of the main advantages of fiber optic networks is their scalability. If you anticipate future network expansion, it's wise to

### Optical Circuit Switch

Enable new AI architectures with the Optical Circuit Switch (OCS) The OCS optimizes data center networks by minimizing electrical switches and optical

### How to Choose the Suitable Number of Fiber Cores for

After covering the basic concepts of fiber cores, the next focus is to clarify the criteria for selecting the appropriate number of fiber cores. When

### Get reliable Layer 3 Switches from US stock with fast shipping ...

At the core of Ethernet networks there always are Layer 3 switches able to properly route the aggregate data traffic. Datainterfaces is introducing the latest Layer 3 switches for 10G, Gigabit and Fast

### All-fiber architecture for high speed core-selective switch

In this work, we present an all-fiber architecture for a high-speed core-selective switch, crucial for efficient signal distribution in multicore networks.

### MikroTik · Switches

MikroTik makes networking hardware and software, which is used in nearly all countries of the world. Our mission is to make existing Internet technologies

### TJ1600 Core Switch | High-Capacity Optical Switching

TJ1600 Core Switch is one of the world's largest disaggregated multi-terabit optical switches designed for building high-capacity optical backbone networks, 5G core networks and interconnecting hyper

### 16 Port Layer 3 Managed Switches | Comms Express

Explore a selection of 16-port Layer 3 managed switches from top brands like Cisco, Netgear, D-Link, TP-Link, Ubiquiti, Zyxel, Linksys, Dell, and HPE at Comms

### 10G uplink 16-port L3 managed Ethernet switch

L3 managed Ethernet fiber switch with 12\*10/100/1000M RJ45 ports and 4\*1/10G uplink SFP+ fiber ports. Built-in 30W power supply and 1U/19" cabinet mount.

### 24-Port Layer 3 Stackable 10 Gigabit Fiber Managed

The DXS-3400 Series switches support several core components of Data Center Bridging (DCB) such as IEEE 802.1Qbb Priority-based Flow Control, IEEE

### Cisco Nexus 9300-FX3 Series Switches Data Sheet

Based on the Cisco Cloud Scale technology the Cisco Nexus 9300-FX3 Series is the latest generation of access switches. Building on the successful Nexus 9300-FX series, the platform

### Optical Circuit Switch

The 300x300 port Optical Circuit Switch is based field-proven and ultrareliable digital liquid-crystal platform from Coherent, which features three key advantages: low

### Network Switches | Huawei Enterprise

Huawei Ethernet Switches Turbocharge your enterprise network with high-performance, high-availability for resilient services and simplified management.

### 16-ports Full Gigabit L2 Unmanaged Fiber Switch OPT

OPT-6016 L2 Fiber Ethernet Switch provide 16-port 1000M SFP fiber ports, the SFP type is flexiable according to user needing, such as 1000Base-T, 1000Base-SX,

### Gigabit 16-port L2+ managed Ethernet switch

L2+ managed Ethernet fiber switch with 8\*10/100/1000M RJ45 ports and 8\*100/1000M uplink SFP fiber ports. It built-in power supply and 1U/19" cabinet

## Contact Us

For more information, pricing, or custom solutions, please contact us:

Website: <https://www.buglerdental.co.za>

Email: [sales@buglerdental.co.za](mailto:sales@buglerdental.co.za)

Phone: +27 71 549 2836

Address: 22 Impala Crescent, Waterfall Business Estate, Midrand, 1685, South Africa

This document is for informational purposes only. Specifications subject to change without notice.

