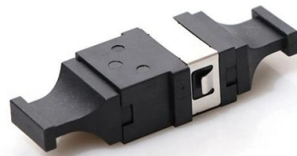


Disadvantages of Broadband Access Switches



Overview

Network switches provide significant advantages in terms of performance, security, scalability, and bandwidth management. Reduced Workload: They help reduce the workload on individual host PCs. Redundancy measures such as backup switches or spanning tree protocols can be implemented to mitigate this risk, but they add additional. However, there are some disadvantages of using switches that are often overlooked. Switches have a fixed number of. Despite the fact that it might appear to be abnormal to cover this rudimentary electrical subject at quite a late stage in this book arrangement, I do so on the grounds that the sections that follow investigate a more seasoned domain of computerized innovation dependent on mechanical switch. Advantage: Routers act as “traffic controllers,” ensuring data reaches its destination via the fastest and most efficient route. “Whose letter has arrived?

‘I’ll just shout it out!’ In an old neighborhood, a loud broadcaster (hub) announces every letter that arrives, hoping the right recipient hears. What are the pros and cons of a switch?

Hello all, I am in need of another lan connection in my room, however, I only have 1 Lan port/cable in my room, I was thinking of getting the 'TP-LINK TL-SF1005D 5-PORT NETWORK SWITCH 10/100MBPS DESKTOP PLASTIC' switch for €10 so that I could get more lan.

Article Content

What are the risks resulting from having a switch without

Exactly, my switch GS108Ev2 does not allow any restriction to a specific VLAN or port for the configuration. I would need a GS108T for that that

Why ISPs Loved PPPoE – And Why They're Moving to

PPPoE has long been the backbone of ISP networks, but modern broadband demands are pushing ISPs toward IPoE. Learn why providers are

5 Advantages and Disadvantages of Network Switches

This page explores the advantages and disadvantages of network switches. It covers the benefits and drawbacks of using switches in a network and provides a basic overview of what a switch is and how

Network switch types, functions advantages, and

They also manage switches but they offer less advanced features compared to a fully managed switch. They are more powerful and offer more

SD-WAN vs MPLS vs Internet: What's the Difference?

Broadband internet is any high-speed internet service that is always on and faster than traditional dial-up access. Broadband internet is ubiquitous and cost

Advantages And Disadvantages Of Broadband | ipl

In terms of the disadvantages of fixed line broadband, one of these is that it can be more complicated to set up than mobile wireless broadband. Also, you 'll probably have to pay for a line connection so it

The Pros & Cons of Fibre Broadband

Our expert conclusion Fibre broadband is the future of internet connectivity. It's the perfect choice for homes and businesses that require fast,

What is the disadvantage to cascading multiple switches?

The switches in each room will all connect to a central switch in the server closet. I've heard conflicting accounts as to whether this will cause network collisions, latency

Barriers to Household Connectivity

This means that those who do not have in-home access to broadband may be losing out on the full range of free-to-air content available to them. There

Advantages and disadvantages of Switch

Network availability issues are hard to be followed through the organization switch. Broadcast traffic might be problematic. If switches are in the indiscriminate mode, they are

What is the disadvantage of Ethernet switch?

Misconfigured switches can create bottlenecks, security vulnerabilities, or even outright network outages. Furthermore, monitoring the performance of a large network of switches requires

What are disadvantages of a switch?

However, like any other device, switches have their own set of limitations and disadvantages. In this article, we will explore the disadvantages of switches and how they impact

The Hidden Disadvantages of Switches You Need to Know

In conclusion, switches are an essential component in networking, but they do have some hidden disadvantages that you need to be aware of. These include limited scalability, security risks, single

Five reasons you're wrong about switching broadband

Switching is one way to make sure you're paying a reasonable amount for your broadband deal, but if you're happy with the provider you're with,

Broadband Basics: How it Works, Why It's Important,

Reliable high-speed broadband is essential to life in the U.S. today. With historic federal investments now available, states are working to expand

Advantages and disadvantages of networks

Revise the advantages and disadvantages of LAN and WAN computer setups; bus, ring and star networks; plus connecting to and using broadband internet.

Wired vs. Wireless Networking

Wired LANs that use hubs can suffer performance slowdown if several computers heavily access the network simultaneously. Use Ethernet switches

Network switch types, functions advantages, and

The types of network switches are managed, smart, PoE, and unmanaged. They are used to forward packets within the same network.

Advantages and Disadvantages of a POE Switch

Hello Jerry Kent, Power over Ethernet switch has its advantages and disadvantages. First what are the advantages: Flexible and efficient network designs – with PoE, the constraint of having AC power

What Is a Network Switch, and When Do You Need One?

A network switch is a small box that adds extra Ethernet ports to your router. If you want to use several devices over a wired internet connection, or if

Advantages and Disadvantages of Network Switches

Network switches provide significant advantages in terms of performance, security, scalability, and bandwidth management. However, they

Network Switches: The Backbone Of Modern Connectivity

Everyone hears all messages, even if they're irrelevant. Disadvantage: This method is noisy, inefficient, and causes unnecessary

Broadband over power lines (BPL)

Advantages and disadvantages of broadband over power lines Advantages Electricity power lines are ubiquitous in most developed countries.

What are the pros and cons of a switch? : r/HomeNetworking

Quality of switches vary, you'd want to fork out for something half decent. Can introduce a security weak point by making free ports with direct access to your network (hence why you'd want a managed

Router vs. Switch (And Hub): Advantages and

A router can be used as a switch (many routers have a switch designed into the same box) but a switch can't be used as a network-creating router. To

Broadband: Technology overview

An overview of different wired, wireless and upcoming broadband technologies and a description of their advantages, disadvantages and sustainability.

Contact Us

For more information, pricing, or custom solutions, please contact us:

Website: <https://www.buglerdental.co.za>

Email: sales@buglerdental.co.za

Phone: +27 71 549 2836

Address: 22 Impala Crescent, Waterfall Business Estate, Midrand, 1685, South Africa

This document is for informational purposes only. Specifications subject to change without notice.

