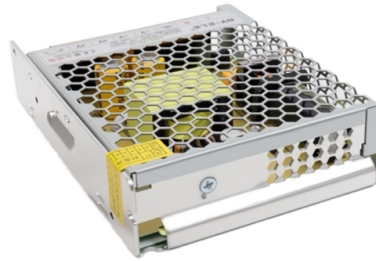


Gigabit Aggregation Switch 8 Fiber Optic 16 Electrical



Overview

F5800-16FX-8F-2TC is a gigabit uplink fiber optic aggregation switch located in the middle of the network architecture, responsible for managing data from access layer switches and forwarding it to core switches, thereby reducing the burden on the core layer. Equipped with eight SFP+ ports, two additional SFP28 ports and one RJ45 console port for configuration. It also enables easy expansion by simply adding more fiber or network. The BP-SWM8G8F01 is a full gigabit managed Ethernet fiber switch. It has 8*10/100/1000Base-T RJ45 ports and 8*100/1000Base-X SFP fiber slot ports. Each port can support wire-speed forwarding. Fiber optic cable, as a transmission. CERIO CS-3000 Series Model : CS-34816XG is the latest powerful high-performance L2/L3 Lite Fiber Optical Switch, It built-in web-browser management interface allows the administrator to manage and obtain detailed information of the local area network conveniently. With high integration, rich functionality, and ease of.

Article Content

8*10/100/1000M RJ45 and 24*100/1000M SFP and 4*1/10G SFP+ fiber

The B1-36368FM is a 10G L2+ managed Ethernet fiber switch independently developed by BISMUN. It has 8*10/100/1000Base-T adaptive RJ45 ports and 24*100/1000Base-X SFP ports and 4*1/10G

RBG-F4808M3-AC

Explore the RBG-F4808M3-AC a Layer 3 managed all-fiber Gigabit switch with 48 SFP and 8 10G ports. Redundant power - buy now for high-density networking!

Switch with 16x SFP, 8x10/100/1000M Base-TX or SFP,

This layer 3 Managed Gigabit switch is easy to install and optimized for growing businesses. It is also usable for VoIP and/or IP-Cameras. The switch offers 16

Dahua 8GE Combo + 16*SFP ports L2+ Managed

Dahua 8GE Combo + 16*SFP ports L2+ Managed Aggregation Fiber Switch Code : NS-DH-AAS010 350Gbps switching capacity 35.7Mpps packet forwarding rate,

16+8 Ports Managed Fiber Ethernet Switch with 1Gbps

Managed Fiber Ethernet Switch enables installers to obtain long distance fiber with high speed network for installing various IP devices. A comprehensive device

RG-SF2920-16GT2SFP 16-Port GE All-Optical Switch, 2 x Gigabit

All-Optical Ethernet Switch RG-SF2920-16GT2SFP The Ethernet architecture and novel Fiber-to-the-Room (FTTR) deployment delivers 1G fiber-to-the-room access. This switch provides 16 x

EXTR MGD PoE+ Switch

LIE1000 Series Gigabit Ethernet (1000-Mbps) Extreme Temperature Managed PoE+ Switch - (8) 10/100/1000-Mbps Copper RJ45, (4) 100/1000-Mbps SFP Economical

What Is an SFP Port on a Gigabit Switch?

What Is an SFP Port on a Gigabit Switch? An SFP port (Small Form-Factor Pluggable port) on a Gigabit switch is a dedicated slot designed to support

4+8+16 Ethernet Fiber Switch | RLH Industries, Inc.

The RLH Industrial Managed Ethernet Switch offers 4 Gigabit SFP slots, 8 RJ-45 Fast Ethernet Ports, and 16 100Base-FX fiber ports. The high fiber port count

Fiber Aggregation Switch: What You Need to Know in 2025

Looking for a reliable fiber aggregation switch? Discover top-rated models with Layer 3 support, SDN features, and PoE. Click to explore high-performance solutions for enterprise networks

24*Gigabit SFP 4*10G SFP+ 8*Gigabit Electrical/optical Combo 3

WS5834GXF 10 Gigabit uplink 24 Gigabit optical port managed switch, provides 24*10/100/1000 adaptive SFP ports, 4*10 Gb SFP+ ports, 8*10/100/1000 adaptive electrical/optical combo ports and

Wholesale 16+8 Gigabit uplink fiber optic aggregation switch Factory ...

Discover high-performance with our 16+8 Gigabit uplink fiber optic aggregation switch, perfect for efficient data management and seamless connectivity. Upgrade today!

16-Port Ethernet Fiber Switch with 16K MAC & 320G

16-port Ethernet fiber switch with 16K MAC, 16 Mbit buffer, and 320 Gbps bandwidth, offering robust performance and efficient heat dissipation.

Amazon : Fiber Switches

Discover fiber switches designed for reliable network connectivity. Browse 10G, 2.5G, and gigabit options to expand your bandwidth.

24 Port Fiber Switch

24 Port L3 Managed Fiber Switch The AE800-24GF8GC410GF-L3M is a high-performance 24 Port Fiber Switch designed with next-generation hardware and a

Network switches combine 24 PoE ports with 10G fiber

The LMP-2804G-4XS-24-T incorporates 24 Gigabit Ethernet 802.3at PoE ports and four 1G/2.5G/10G SFP+ fiber optic slots. Power output varies

Exploring the Best 8-Port Gigabit Ethernet Switches for

Explore fibermall about 8-port Gigabit switches! Find the best options to enhance your network performance in this detailed guide.

Aggregation Switches | Managed Core Network

Built with a durable metal enclosure and advanced switching architecture, the Aggregation Switch supports multiple Gigabit and 10G SFP uplinks for flexible

Industrial Rail-type Lite Managed 16* Gigabit Electrical

With high integration, rich functionality, and ease of use, it showcases the highest standards in the industry. It includes 16 Gigabit electrical ports and 8 Gigabit

Industrial Managed 16-Port Optical Fiber Switch with

The GAOtek industrial managed 16-port optical fiber switch ensures stable and reliable Ethernet transmission, perfect for harsh environments like industrial

Digitus Gigabit Fiber Optic Switch, 8 Port SFP, 2 Port RJ45 Uplink

The DIGITUS® Gigabit Fiber Switch provides 8 fiber SFP ports and 2 RJ45 uplink ports with Gigabit bandwidth. Cost-effective acquisition, easy handling, and high performance are the strengths of this

16 Fiber Port & 2GE Fiber & 2/4 UTP lan port Fiber optic Ethernet switch

Multi-gigabit optical aggregation series is my company based independent software research and development from a fiber aggregation switches, which have 16 * 1000M optical ports and 2/4 * 10/100

Switch Aggregation

Faster replacement and priority support, covered for 5 years. High-performance 10G SFP modules for optimal connectivity. An 8-port, Layer 2 switch made for 10G

16 port fiber optic switch

16 port fiber optic switch for wholesale, nearly starting from \$18.5, minimum order of 1 unit. S2700 series POE switch, ideal for bulk orders and resale. Available in large volumes.

CS-34816XG - 16 Port SFP Gigabit + 8 Combo Gigabit Ports

Supports 16 of SFP Gigabit ports, 8 Combo Gigabit ports and 4 SFP+ 10Gigabit ports. Supports Internal Bus Speed up to 128Gbps and the exchange rate over 95.24Mpps.

Fiber-optic communication

Modern fiber-optic communication systems generally include optical transmitters that convert electrical signals into optical signals, optical fiber cables to carry the

AXIS D8308 Fiber Aggregation Switch

For long distance installations Long-distance installations often require fiber optic cables to connect different sites because of fiber's ability to transmit data over much greater distances with minimal

Gigabit 4 Optical 8 Electrical Managed Industrial

BL169GM-SFP is a network managed industrial Ethernet switch that complies with FCC, CE and RoHS standards. Support 4 gigabit optical ports and 8 gigabit

AXIS D8308 Fiber Aggregation Switch

Developed for long distance fiber installations. Equipped with eight SFP+ ports, two additional SFP28 ports and one RJ45 console port for configuration. With AXIS

fiber switch 16 port | Newegg

Cisco Catalyst 1300 Managed Switch, 16 Port GE, 8 Port 2.5GE, PoE, 4x10GE SFP+, Limited Lifetime Protection Model | C1300-24MGP-4X Brand: Cisco Systems, Inc. Series: Catalyst C1300 Series Part

Gigabit 16-port L2+ managed Ethernet switch

The ONV33168FM is a gigabit L2+ managed Ethernet fiber switch independently developed by ONV. It has 8*10/100/1000Base-T adaptive RJ45 ports and

16-ports Full Gigabit L2 Unmanaged Fiber Switch OPT

OPT-6016 L2 Fiber Ethernet Switch provide 16-port 1000M SFP fiber ports, the SFP type is flexiable according to user needing, such as 1000Base-T, 1000Base-SX,

Choosing the Best 16-Port Gigabit Ethernet Switch for Your Home

Discover fibermall about finding the top 16-port gigabit Ethernet switch. Compare options and boost your home network. Read more now!

Contact Us

For more information, pricing, or custom solutions, please contact us:

Website: <https://www.buglerdental.co.za>

Email: sales@buglerdental.co.za

Phone: +27 71 549 2836

Address: 22 Impala Crescent, Waterfall Business Estate, Midrand, 1685, South Africa

This document is for informational purposes only. Specifications subject to change without notice.

