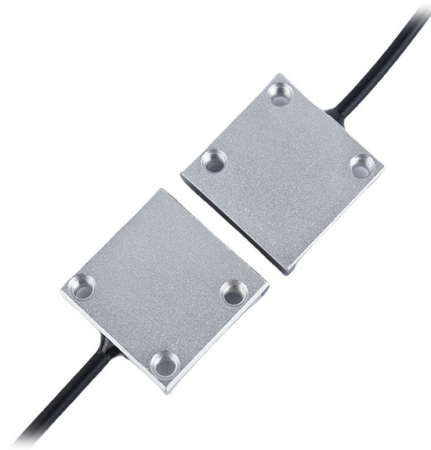


Height Requirements for Outdoor Integrated Distribution Boxes



Overview

Wall-mounted boxes should be 4'. This height makes it easy to reach without bending or stretching. Ground-mounted boxes should be raised 2 to 4 inches to avoid. We'll decode NEC Article 312 requirements, compare NEMA vs IP ratings, analyze busbar sizing calculations, and provide specification decision matrices for different applications. □□ Specification Insight: NEC 312. 2 requires outdoor distribution boxes to have rain-tight enclosures when installed in. What is the standard height for a wall-mounted distribution box?

What factors should you consider when choosing the installation height?

What happens if the distribution box is installed too low?

What tools do you need to measure the correct height?

What are the risks of not following height. Choose the right box based on environment (indoor/outdoor), load capacity, and durability. Check for proper IP/NEMA ratings and material quality. Ensure safe placement: install in dry, accessible areas with good ventilation and at appropriate height (typically ~1'. This outdoor Plot & Service junction box will be utilised for providing/interconnecting service main of distribution network. IS 13703 (Part-1&2)-1993 / IEC 60263/1-1986:. The minimum height requirement for freestanding outlets is 12" min – 18" max.

Article Content

Cable Distribution Box Layout: 10 Industrial Strategies

The distribution box should be kept at a minimum safe distance from flammable materials, water sources, and heat sources (such as furnaces), and follow the separation

TECHNICAL SPECIFICATION FOR OUTDOOR TYPE DISTRIBUTION FEEDER PILLAR BOX

1. Scope: This specification covers technical requirements of design, manufacture, testing at manufacturer's works, packing, forwarding, supply and unloading at store/site and performance of

The installation requirements for the distribution box

PDF file

TECHNICAL SPECIFICATION FOR OUTDOOR TYPE

The box shall be provided with an Aluminium Earth bus at the bottom, suitable for the rated short time current of the box. The earth bus shall provide Earthing to all the components inside the pillar and

TECHNICAL SPECIFICATION FOR OUTDOOR TYPE DISTRIBUTION

manufacturer's works, packing, forwarding, supply and unloading at store/site and performance of Plot & Service junction box with all accessories for trouble free and efficient operation. This outdoor Plot &

Technical Specifications for Outdoor LT Distribution boxes with ...

Scope: The scope of this specification covers Weather / Vermin proof LT distribution boxes (LTD) with controllers, MCCB, MCB, Bus bars, Contactors, CT's, Energy Meter, LT gas filled fixed capacitor, DC

Handbook PO-632

Centralized delivery is our preferred method of mail delivery. Centralized delivery equipment improves delivery efficiency and provides space for large mail items, including packages, which is a great

IP65 Distribution Box

Description: SMICO's IP65 protection rating is one of the common protection rating standards for outdoor plastic distribution boxes. IP represents the international

Installation Height And Location Selection Requirements For Ground ...

The distance between the distribution box and the switch box should not exceed 30 meters, and the horizontal distance between the switch box and the fixed electrical equipment it controls should not

How to Improve the Installation Quality of Distribution Boxes

Learn key methods to enhance distribution box installation quality, including location, height, wiring, and safety compliance.

Portable Distribution and Termination Boxes | UpCodes

Explore a searchable database of US construction and building code. Code regulations are consolidated by state and city for easier navigation.

Non-Hazardous Outdoor Enclosures, Installation and

This article is about Non-Hazardous Outdoor Enclosures, Installation and Commissioning and Materials Selection & Requirements of Electrical Power

Outdoor Electrical Distribution Box Specifications: NEC

This specification guide provides system designers, electrical engineers, and procurement professionals with the technical criteria needed to

How High Should The Exterior Cable Box Be Installed?

To minimize water ingress during flooding or firefighting, outdoor boxes must be installed at a minimum height of 450mm from ground level. They should not be placed in dustbins, coal or

Low voltage distribution box: weatherability standard and protection ...

Low voltage distribution box outdoor use requires IP65 or NEMA 4X ratings, corrosion-resistant materials, and proper sealing for lasting weather protection.

What is the Ideal Installation Height for a Distribution Box

Wall-mounted boxes should be 4.5 to 5.5 feet high. This height makes it easy to reach without bending or stretching. Outdoor boxes need to be at least 3 feet

Weatherproof Outdoor Distribution Boxes: Key Design Insights

Weatherproof outdoor distribution boxes ensure reliable power distribution in challenging environments by protecting against moisture, dust, and temperature extremes. Key design points include high

Description of the difference in IP waterproof ratings for

Waterproof distribution boxes are widely used in various harsh environments, such as outdoors, power facilities, and industrial sites. In order to

The height requirement of distribution box

The distribution box shall be installed horizontally and vertically. After the box is placed, the perpendicularity of the box shall be found with ruler board to meet the requirements.

Understanding IP Protection Ratings for Distribution Boxes: Choosing ...

Choosing distribution boxes is a decision that seems technical but has real-world consequences. Getting the IP rating right isn't just about meeting specs - it's about ensuring

TECHNICAL SPECIFICATION FOR LT DISTRIBUTION BOX

General Technical Particulars for LT Distribution Boxes : - The L.T. Distribution Boxes should be of the dimensions as per the drawing & details in the table furnished.

Outdoor Electrical Box with Breakers: Circuit Protection & Load ...

This comprehensive technical guide explores the engineering principles behind outdoor electrical boxes with integrated breakers, focusing on circuit protection strategies, load distribution

Summary of key points for construction and installation of distribution ...

The construction and installation points of distribution boxes and switch boxes are summarized as follows: 1. Select qualified products that meet national standards and safety requirements.

Understanding Outdoor Power Distribution Box: A

Explore the features and benefits of SX outdoor power distribution box, designed for durability, safety, and reliable power in any environment.

Understanding Distribution Boxes: A Comprehensive Guide

A distribution box, also known as a power distribution box or electrical distribution box, is used to distribute electrical power safely to multiple

Adjustable Height Option For Waterproof Distribution Box Installation ...

Can Waterproof Distribution Box Height Be Adjusted? Standard enclosures feature internal mounting plates with fixed depths to maintain a tight seal. However, height adjustment occurs during

Size determination, installation method and wiring mode

The distribution box is the central hub of the home circuit and the general control of our daily power consumption. It is an indispensable electrical equipment. If there

Contact Us

For more information, pricing, or custom solutions, please contact us:

Website: <https://www.buglerdental.co.za>

Email: sales@buglerdental.co.za

Phone: +27 71 549 2836

Address: 22 Impala Crescent, Waterfall Business Estate, Midrand, 1685, South Africa

This document is for informational purposes only. Specifications subject to change without notice.

