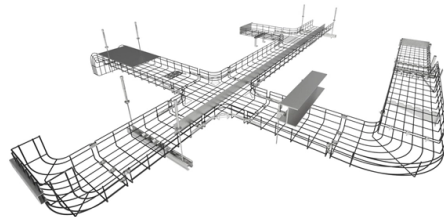


How to tell if a switch is industrial grade



Overview

Industrial-grade switches differ significantly from regular switches in terms of appearance, usage environment, communication protocol, network management, reliability, lifespan, operating voltage, installation method, and heat dissipation method. An industrial switch is one designed specifically for industrial applications. In many cases, the name of the switch will include the word “industrial” in it to identify its design intent. These environments can include factories, manufacturing units, warehouses, and even outdoor areas where equipment must handle extreme conditions. Industrial-grade network switch built to withstand harsh. How does an industrial switch differ from a regular switch?

Industrial switches and regular (commercial) switches serve similar functions in connecting network devices, but they are designed for vastly different environments and applications.



Article Content

Industrial Switches vs Commercial Switches

Industrial vs. Commercial switches compared. Learn differences in durability, usage, and applications for networking.

Industrial Ethernet Switch Selection Guide

Learn how to choose an industrial Ethernet switch for automation systems, Profinet networks, and reliable industrial PCBA deployment.

Industrial Ethernet Switches vs Regular Ethernet

When you put a regular Ethernet switch (not industrial-grade) in an industrial area of any kind, it will likely physically damage the device, resulting in

Differences Between Industrial Ethernet Switches and Co...

Industrial-grade Ethernet Switches are typically designed for industrial scenarios and are installed using a DIN rail, which supports a standard 35mm rail. In contrast,

Industrial Ethernet Switches: Benefits, Applications

Industrial-grade Ethernet switches solve such issues in order for seamless communication to occur in the various industrial sectors. In this article,

Grading Scale: Breaking down confusing receptacle

Receptacle grades and subgrades Here is a list of words I currently see referred to as wiring device grades in electrical specifications: residential, commercial,

Industrial Ethernet Switches: Benefits, Applications

Discover what industrial grade Ethernet switches are, their unique features, real-world applications, key differences from regular switches, and

How does an industrial switch differ from a regular switch?

Industrial switches and regular (commercial) switches serve similar functions in connecting network devices, but they are designed for vastly different

How should I choose an industrial grade Ethernet switch?

In modern industrial automation, Industrial Ethernet Switches (IES) have become a key component. Correctly selecting the right industrial grade switch is crucial to

Guide to implementing Industrial Grade Switches

However, implementing industrial grade switches is a complex process that requires careful consideration and planning. With detailed analysis

Types of Industrial Grade Network Switches

Modern industrial grade network switches ensure seamless connectivity and power in factory automation environments. When selecting an

How to pick the right Industrial Ethernet Switch for

Industrial Ethernet switches are comprised of managed and unmanaged switches with Gigabit, PoE, and various industry certifications. Featured industrial-grade

What are industrial grade switches?

Industrial grade switches, also known as industrial Ethernet switches, are ruggedized networking devices engineered to meet the unique demands of industrial applications. Unlike commercial

Industrial vs Normal Switch: What's the Difference?

Confused about industrial vs normal switches? Compare their features, performance, and specifications - click here for the full analysis.

Industrial vs Normal Switch: What's the Difference?

When it comes to setting up a network, whether for a business or industrial use, choosing the right switch is essential. These devices manage how data travels

Application differences between industrial-grade switches and ...

Industrial-grade switches are mainly used in industrial automation, intelligent manufacturing, energy monitoring and other industrial fields, and need to operate stably for a long time in extreme harsh

Managing Networks | Why Do I Need an Industrial

I could run down to the local box store or internet marketplace and buy a 5-port switch for less than 20 dollars, or invest in an industrial switch for

The difference between industrial-grade switches and ordinary switches

Here, we explore the differences between industrial-grade switches and ordinary switches in depth to help people who need networking applications better understand and choose the appropriate switch

Guide to implementing Industrial Grade Switches

In this blog post, we will walk you through the key steps and considerations involved in successfully implementing industrial grade switches to

Differences Between Industrial Ethernet Switches and Co...

When users are purchasing network products such as Ethernet Switches, they are often confused about whether to choose industrial-grade or commercial-grade

How Industrial-Grade Switches Enhance Safety and

The Critical Role of Switches in Industrial Settings Industrial environments demand high-performance, reliable, and durable switches to

Every Switch Type You Need to Know for Industrial

7 Common Industrial Switch Types in Electronics Switches come in a variety of shapes, sizes, and current ratings. An industrial-grade switch can

The difference between industrial-grade switches and enterprise-grade ...

Industrial-grade switches and enterprise-class switches exhibit notable differences in design philosophy, structural design and durability, data transmission performance and redundancy, anti-interference

Commercial Vs Industrial-Grade Switch, Which One

Commercial Vs Industrial-Grade Switch, Which One Should You buy? In the modern Tech era, Network switches are backbone of every industry. Whether, you are

What Makes a Network Switch "Industrial Grade"?

Industrial-grade network switches distinguish themselves through rugged design, advanced management features, high performance and adherence to strict

The difference between industrial-grade switches and

Industrial-grade switches and enterprise-class switches exhibit notable differences in design philosophy, structural design and durability, data transmission

Industrial vs Normal Switch: What's the Difference?

Unlike standard switches, industrial switches are built with durability in mind, making them ideal for places where reliability is essential. These switches are designed

Contact Us

For more information, pricing, or custom solutions, please contact us:

Website: <https://www.buglerdental.co.za>

Email: sales@buglerdental.co.za

Phone: +27 71 549 2836

Address: 22 Impala Crescent, Waterfall Business Estate, Midrand, 1685, South Africa

This document is for informational purposes only. Specifications subject to change without notice.

