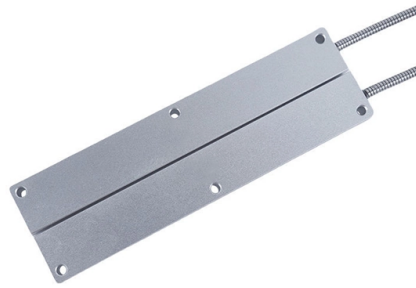


# Installation of square tube bracket for distribution box



## Overview

Align electrical box with keyholes provided in BBS Bracket. Screw assembly to metal stud with STS8 screws. Note: Never install non-metallic sheathed cable. Installing square tube brackets on a metal surface is a task that requires precision, the right tools, and a clear understanding of the process. As a trusted Square Tube Bracket supplier, we're here to guide you through this process, ensuring that you achieve a secure and long - lasting. This video demonstrates assembling steel square tubes using a precision-machined connector block. This results in stable frames, structures, and constructions for mechanical engineering, industry, and research. How do you connect square tubes?

Nowadays, square tubes can often be connected. Mounting bracket is a flexible structure, which makes it easy to adjust or replace the electrical components. All the components, wires and connections are under the protective cover due to the same height. Whether you are an electrical contractor or a construction brigade, knowing how to properly and safely install distribution boxes is the basis of ensuring the safe operation of the entire system. This article details the process of installing them, which helps you comprehend distribution boxes. CUSTOMER RESPONSIBILITIES: At a minimum the customer(s) is responsible for using industry standard hardware and fasteners, inspecting the structural integrity of the structure to which Phoenix Support Systems products will be attached, conforming to all governing codes and regulations at the job.

## Article Content

Square Tubing Brackets | McMaster-Carr

Choose from our selection of square tubing brackets, including bolt-together framing and fittings, press-fit framing and fittings, and more. Same and Next Day Delivery.

How to install a Structured Wiring + Cable Distribution Box

How to install a Structured Wiring + Cable Distribution Box All About Home Electronics 163K subscribers Subscribe

How to install square tube brackets on a metal surface?

Installing square tube brackets on a metal surface is a task that requires precision, the right tools, and a clear understanding of the process. As a trusted Square Tube Bracket supplier,

How to Install a Distribution Box—A Comprehensive

Whether you are an electrical contractor or a construction brigade, knowing how to properly and safely install distribution boxes is the basis of

Joining Metal Square Tubing Using a Heavy Duty

This video demonstrates assembling steel square tubes using a precision-machined connector block.

Installation points of household distribution box

The distribution box of household distribution box should not be installed too high. Generally, the installation elevation is 1.8m to facilitate operation; the electric pipe

How to Install a Distribution Box—A Comprehensive

Before starting the installation, finding a proper place for putting the distribution box is crucial, because it largely decides the safety and convenience

Electrical box mount | Box mounting bracket | Box mount support | Eaton

Not all electrical box supports are created equal. When it comes to rigid, easy to install electrical box supports, Eaton offers a wide variety of B-Lines series electrical boxes that help reduce installation

77-001012-000 Installation Instructions SB3 & SB4, for UL (RevD)

Installation Instructions For In-Wall Electrical Box Support using HOLDRITE Stout Bracket® #SB3 & #SB4 1 To field assemble: Separate bracket sections by bending at the joining tabs several times.

Installation and Instruction Sheets

STEP 1: Align electrical box with keyholes provided in BBS Bracket. Attach plaster ring and slide box and ring in keyholes. Tighten electrical box screws.

FRP square tube installation

FRP square tube installation. Detailed guide to installing fiberglass square tubes: connection methods and precautions.

The installation requirements for the distribution box

A distribution box is the heart of any electrical system. It takes the incoming power and safely distributes it to different circuits throughout your

Connecting square tubes – solutions & techniques

Connecting square tubes made easy: an overview of connection techniques, tube connectors, and application examples.

The Best Solution to Install Components Inside The

All the components, wires and connections are under the protective cover due to the same height, therefore, it is safer to use. What's more, it is

The Complete Guide to Distribution Box: Installation, Types & More

High-usage commercial and industrial installations may require more frequent inspections based on operating conditions and manufacturer recommendations. Can I add circuits to an existing

Small distribution box installation steps

The steps to install a small distribution box include selecting a suitable location, installing the base, placing the distribution box, connecting the

Notes for Installation of Distribution Box

5. Installation position should not be too high to avoid inconvenience in normal use. Usually, the installation height of the distribution box can not exceed 1.8 meters, and the tube needs to be fixed

20mm Box Section Brackets Square Channel Brackets

20mm box section brackets for 20mm x 20mm square box channel. These quality square clamping brackets are made from marine grade 316L stainless steel. 316L

Square Tube Brackets Stainless Steel Square Box

Square Tube Brackets Stainless Steel Square tube brackets for linking together square tube framework. Ideal for use with welding screens, anti-splash screens

How to install square tube brackets on a metal surface?

Installing square tube brackets on a metal surface is a straightforward process if you follow the right steps and use the correct tools and materials. By choosing high - quality square tube

Distribution Box Installation: Advanced Techniques

Distribution Box Installation: Advanced Techniques. The installation of a distribution box is explored in detail, highlighting advanced techniques for achieving a professional and efficient setup.

FRP square tube installation

Installation Practices for Different Applications Fiberglass Square Tubes are widely used in the power industry for cable trays and meter box frames, emphasizing insulation and load capacity, typically

Cautions and Requirements for Installation of

8. After installation, the residue in the distribution box should be cleaned up. When the distribution box is installed and constructed, some safety operation items

Joining Metal Square Tubing Using a Heavy Duty Connector Bracket

This video demonstrates assembling steel square tubes using a precision-machined connector block. The bracket allows multiple tubes to join securely at right angles using bolts, creating a fast ...

## Contact Us

For more information, pricing, or custom solutions, please contact us:

Website: <https://www.buglerdental.co.za>

Email: [sales@buglerdental.co.za](mailto:sales@buglerdental.co.za)

Phone: +27 71 549 2836

Address: 22 Impala Crescent, Waterfall Business Estate, Midrand, 1685, South Africa

This document is for informational purposes only. Specifications subject to change without notice.

