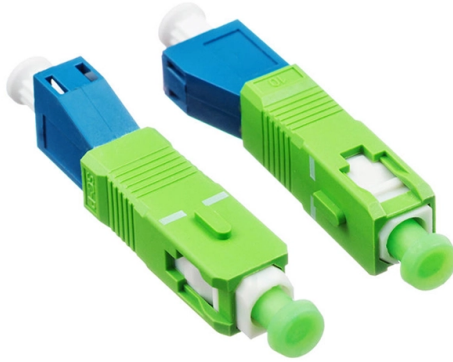


# Monitoring Switch Optical Port



## Overview

Figure 1 Schematic Diagram of Optical Module Connected to Switch 1. Check Optical Module and Port Status Execute the following command to view detailed interface and optical module status: `show interface <interface-type> <interface-number>` Digital Optical Monitoring (DOM) is a feature that allows for the real-time monitoring of various physical and operational parameters of fiber optic transceivers, such as transmit power, receive power, temperature, laser bias current, and voltage. DOM is supported on MS120, MS125, MS130, MS210. When optical modules operate on a switch, it is usually necessary to read the module's internal information to understand its working status—such as connection status and real-time metrics like optical power and temperature. The Cisco Small Business Series Switches allow you to plug in a Small Form-factor Pluggable (SFP) transceiver in their optical modules to connect fiber optic cables. If the same port with the same optical module has link, then I do get a proper readout of the optical monitor command (tx power / rx power / temps / current). Being able to monitor a non-working link is a pretty basic thing to do to be honest and having access to DDM/DOM/optical monitoring of down. MetricFire runs Graphite and Grafana as a fully managed service for growing engineering teams, taking care of storage, scaling, and version updates so your team doesn't have to. Plans start at \$19/month, billed per metric namespace rather than per host, and include engineer-staffed support. The procedure for viewing the.

## Article Content

Get Organization Switch Ports Transceivers Readings History By Switch ...

Return time-series digital optical monitoring (DOM) readings for ports on each DOM-enabled switch in an organization, in addition to thresholds for each relevant Small Form Factor Pluggable (SFP)

Optical Switch Multichannel Single Mode Multi Mode

Optical connections are set by a MEMS-based switch network, where micro-machined silicon mirrors redirect light to the selected ports. The use of MEMS technology offers solid-state reliability and long

How To View Port Status And Optical Module Information On EXTREME Switches

When optical modules are installed on switches, it is necessary to read internal module parameters to monitor operating status, including link connectivity, real-time transmit/receive optical

Optical Transceiver Manufacturer,How To Check Optical

Optical module identification and status monitoring are essential daily tasks for network engineers maintaining Cisco switching systems. This guide provides

Monitoring and Analyzing Switch Operation

Monitoring and Analyzing Switch Operation Overview Switch and network operations Status and counters data Compatibility mode for v2 zl and zl modules Port status Accessing port and trunk

[EX/QFX] How to view the diagnostics data and alarms for Optical

This article explains how to run the digital optical monitoring (DOM) scan on the optical ports configured as Virtual Chassis ports (VCPs) and display the statistics.

10 Best Open Source Switch Port Monitoring Tools

Switch port monitoring improves your networking. Read about the ten best open-source tools and optimize all of your monitoring with MetricFire.

Digital Optical Monitoring

Digital Optical Monitoring This feature module provides information on the digital optical monitoring (DOM) feature for the Cisco ASR 901 Series Aggregation Services Router.

How To View Port Status And Optical Module

To monitor the operating status of optical modules installed on a switch, it is necessary to read the module's internal information, including link

## Switch Port Monitoring Guide

Learn how switch port monitoring enhances network performance, security, and troubleshooting. Explore top tools for real-time insights.

Checking your network's backbone with switch monitoring

Monitoring switch ports is essential for effective network management, as it involves continuously tracking port status and detecting unusual activity through

## Digital Optical Monitoring

Digital Optical Monitoring (DOM) is a feature that allows for the real-time monitoring of various physical and operational parameters of fiber optic transceivers, such as transmit power, receive power,

Re: Optical monitoring not possible on ports with link down?

Am I missing something or the optical monitoring only works when the link is up? I am trying to troubleshoot some fiber connections which were unreliable / not coming up and when I use the

## Meraki Adds SFP Health Monitoring - Network Warehouse

If you haven't heard about this yet, we are excited to announce a new feature that provides enhanced visibility into the monitoring data of SFP (Small

## Remote Fiber Monitoring System RFTS

Remote Fiber Monitoring System with wide range of plugin OTDR modules, highly scalable optical switch and comprehensive management system

## Huawei Switches Viewing Optical Port Receiving and Sending

Use the command display transceiver to view the optical module information of all optical ports, and use the command display transceiver interface interface-type interface-number to view the

## 1xN All-Optical Switch for Network Monitoring

M2 Optics offers a customized 1xN optical switching platform designed for network monitoring and optical multicasting applications in both single mode and multimode environments.

## Switch Monitoring Software | Monitor Switch Health,

Monitor switch health, interface utilization, port status, stacks, VLANs, and hardware sensors with OpManager. Detect CRC errors, duplex mismatches, and bandwidth

## Optical Switch for Network Monitoring, WSS, Optical

SwitchLight is a fiber optic switching device designed for network monitoring, optical add-drop, multicast, and wavelength selective switching.

How can I adjust the digital optical monitoring thresholds

I have a Cisco/Meraki MS225 switch with four SFP+ ports. I have a fiber optic module in one of those ports. All five of the DOM values are showing

View the Optical Module Status on a Switch through the Command

On other vendor's switches I was always able to show DOM/DDM/optical-monitoring parameters for ports in down state which can help a lot to troubleshoot why the link is not working. In

How To View Port Status And Optical Module Information On Cisco

When optical modules operate on a switch, it is usually necessary to read the module's internal information to understand its working status—such as connection status and real-time

## Contact Us

For more information, pricing, or custom solutions, please contact us:

Website: <https://www.buglerdental.co.za>

Email: [sales@buglerdental.co.za](mailto:sales@buglerdental.co.za)

Phone: +27 71 549 2836

Address: 22 Impala Crescent, Waterfall Business Estate, Midrand, 1685, South Africa

This document is for informational purposes only. Specifications subject to change without notice.

