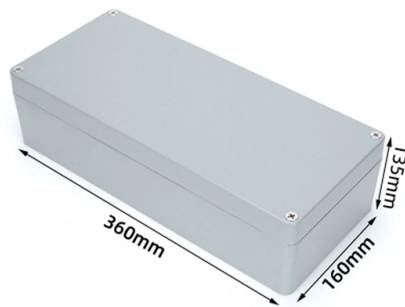


Performance Comparison of 48-core Optical Cable Terminal Boxes with Comparative Models



Overview

2024's ultimate guide to buying high-value fiber optic terminal boxes! we've rigorously tested and compared 6/12/24/48-core pull-out and rack-mounted terminal boxes to help you choose the perfect fit for home broadband upgrades, small server room cabling, office. 2024's ultimate guide to buying high-value fiber optic terminal boxes! we've rigorously tested and compared 6/12/24/48-core pull-out and rack-mounted terminal boxes to help you choose the perfect fit for home broadband upgrades, small server room cabling, office. Fiber core count defines the maximum number of optical terminations or distribution points that a fiber enclosure can support. Manufactured from anti-UV ABS+PC material and rated IP65, this outdoor fiber termination box ensures. To determine the ideal capacity for a Fiber Optic Terminal Box (FOTB), you must match the fiber count—whether 12-core, 24-core, or 48-core—to your current active subscriber density while allowing for a 20-30% growth margin for future expansion. Choosing the right capacity prevents high initial. 48 core SC/ 96 core LC fiber distribution splicing for the last mile installation The 48 Core fiber distribution box features a two-panel flip-up design, providing a separate working area for effortless management by the installer. It is widely used for FTTx cabling of optical fiber and cable, providing an ideal solution for the construction of entry terminals, telecommunications cabinets, cross connections, computer rooms and other environments.

Article Content

48 Core FTTH Wall Mounted Distribution Box

The unit comes with two 12-fiber splice trays. It is with lock security and can be opened by key. It can display for 48 cores SC or 96 cores LC connections as per

12-Core, 24-Core, or 48-Core? How to Determine the Capacity of a

To determine the ideal capacity for a Fiber Optic Terminal Box (FOTB), you must match the fiber count—whether 12-core, 24-core, or 48-core—to your current active subscriber density

Fiber Optic Distribution Box

The fiber optic distribution box is the client wiring equipment in the FTTH optical network, mainly used for optical transmission terminal end fusion splicing,

8 Core vs 16 Core vs 24 Core vs 48 Core Fiber Capacity

Engineering explanation of fiber core count differences in terminal boxes and how capacity affects deployment structure and scalability.

48-Fiber Termination Box - 2 Input Ports (12mm and

It provides 24 output ports for drop cables up to 3 mm, with a splice capacity of 48 fibers to meet diverse network demands. Crafted from durable PC + ABS

Fiber Distribution Box & Terminal Box | Top-Quality

Fiber Distribution Box & Terminal Box manufacturer. Fiber Distribution Box are used in cross-connection (indoor and outdoor devices). They are available in

The Types of fiber Optical Terminal Boxes and How to

For outdoor use, a box that is waterproof and dustproof is necessary. For indoor use, a box that is fire-retardant and made of sturdy material may be

Optical Fiber Distribution Box 32 or 48 Core

Optical Fiber Distribution Box 32 or 48 Core - Copy Total enclosed structure. Material: ABS, wet-proof, water-proof, dust-proof, anti-aging, protection level

Fiber Optical Distribution Box

A Fiber Optic Distribution Box is another widely used product aimed at enhancing network performance. Its purpose is to protect the connection points where

Datasheet POR 48 Wall-mounted Optical Distribution Box

Wall mounted fiber optical box is designed for the placement of up to 48 optical connectors indoor. Optical cables can be lead in/out from upsite or downsite. Adapters plate is selectable and splicing

FTTH 48-Cores Outdoor Fiber Termination Box

The 48-Cores Outdoor Fiber Termination Box is a high-capacity, wall-mounted FTTH enclosure designed for reliable fiber termination, splicing, and distribution in

FTTH Fiber Optic Terminal Box ODF OTB ODB Fiber

Empowering Fiber Connectivity Encompass everything from distribution terminals to drop cables, meticulously crafted for effortless installation and dependable

16/24/48 Core FTTH ABS Fiber Optic Terminal Box

The Fiber Optic Terminal Box is a comprehensive solution designed to simplify and optimize the connectivity of your FTTH communication network system.

48 Core Fiber Terminal Box Guide: Structure, Material Properties, and ...

Explore the 48 core fiber terminal box: structure, material properties, and key performance metrics. Learn about its specifications, durability, and common applications in telecom and network

Rack Mount Fiber Optic Patch Panel And Termination

The rack mount fiber termination box features a standard 19-inch frame, available in 1U, 2U, and 4U sizes. Its sliding-out design and push-pull drawer not only allow

Outdoor Indoor Fiber Distribution Box IP65 FTTH 48

With its innovative design and robust features, this 48 core fiber distribution box is a cost-effective and reliable choice for optimizing fiber optic networks in diverse

12-Core, 24-Core, or 48-Core? How to Determine the Capacity of a

In modern FTTH (Fiber to the Home) and FTTB (Fiber to the Building) deployments, the terminal box acts as the bridge between the distribution cable and the drop cables leading to the

2024 fiber optic terminal box recommendations | 6/12/24/48 core pull ...

2024's ultimate guide to buying high-value fiber optic terminal boxes! we've rigorously tested and compared 6/12/24/48-core pull-out and rack-mounted terminal boxes to help you choose

OPTICAL TERMINATION BOXES

Overview: AFOC fiber optic termination box (FOTB) Series are used to distribute, splice, and store the optical cables which enter from the bottom of the termination boxes. There are two connection ways:

High-Quality Fiber Optic Terminal Boxes

Fiber Optic Terminal Box (FTB) is a compact fiber optic management product. It is widely used for FTTx cabling of optical fiber and cable, providing an ideal solution

Comparison of the difference between optical fiber terminal box and ...

The optical fiber terminal box as the terminal equipment of the optical cable line should have 4 basic functions 1 Fixing function After the optical cable enters the rack, its outer sheath and reinforcing core

High quality FTTH junction box, 48 core IP55 fiber optic

The FDB-48 is suitable for indoor or outdoor FTTX applications that support up to 48 subscribers. It has a durable wall-mountable housing with a weatherproof gasket

48 Cores Wall Mounted Fiber Optic Terminal Box As ...

Buy high quality 48 Cores Wall Mounted Fiber Optic Terminal Box As distribution box for cables management from China Fiber Termination Box supplier with free shipping to worldwide and

Contact Us

For more information, pricing, or custom solutions, please contact us:

Website: <https://www.buglerdental.co.za>

Email: sales@buglerdental.co.za

Phone: +27 71 549 2836

Address: 22 Impala Crescent, Waterfall Business Estate, Midrand, 1685, South Africa

This document is for informational purposes only. Specifications subject to change without notice.

