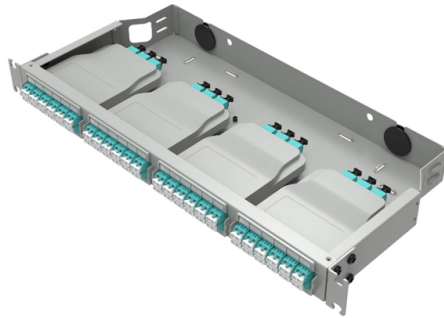


Port down after VLAN segmentation on access layer switch



Overview

Symptom: The switchport is shutting down or not passing traffic after connecting a device. Cause: Port security may be misconfigured, leading to violations that cause the port to go into an error-disabled state. Please rate and mark as an accepted solution if you have found any of the information provided useful. This then could assist others on these forums to find a valuable answer and broadens the. An SVI stuck in up/down means something is wrong with the underlying VLAN — no active ports, a deleted VLAN, or STP blocking every path. Here is how to diagnose and fix every cause. You configure an SVI, assign an IP address, type no shutdown, and expect it to come up. Instead, show ip interface. Network segmentation is crucial for security, performance, and efficient network management., computers, printers) connect to a switch.

Article Content

Troubleshooting Common VLAN and SVI Configuration

To maintain strict separation, regularly audit VLAN configurations and ensure that access lists and VLAN maps are properly implemented to enforce the

Port on switch down/down (notconnect)

After lots of troubleshooting, I'm unable to get the port Gi1/0/1 up, it's always in the state down/down (notconnect). Site B also has the exact same

Troubleshooting SVI Up/Down on Cisco Switches

Fix Cisco VLAN interface (SVI) showing up/down. Covers all causes: missing ports, VLAN deleted, STP blocking, autostate, and step-by-step resolution.

Consolidated Platform Configuration Guide, Cisco IOS

When a switch has an IP access list or MAC access list applied to a Layer 2 interface, and you apply a VLAN map to a VLAN that the port belongs to,

Troubleshooting VLAN Connectivity Issues

Pinging between VLANs or capturing traffic between VLANs shows packet loss, even though the physical NICs (vmnics) are reported as being up (from the physical switch and the ESXi hosts).

Fix Network Segmentation Problems: Step-by-Step Guide

However, misconfigurations in VLANs, subnets, or routing can cause connectivity issues, preventing devices from communicating properly. This step-by-step guide

Troubleshooting Common Issues with Switchport Mode

These ports are typically placed in "access" mode to carry traffic for a single VLAN. Below are common issues that arise with switchport mode access

Cisco Switch not passing vlan traffic

I have 2 WS-C3750G-48TS-S cisco switches that have the same vlan configurations between the 2 with a fiber uplink as the the main trunk port. However I have a device on switch 1 that will not

Common Causes of Slow IntraVLAN and InterVLAN

For cut-through L3 switches, watch for underruns and, when you see them, check all ingress ports for errors. Software or Hardware Misconfiguration

BRKENS-2502a

Limited network access prior to authentication with Pre-Authentication ACL. After a host has been successfully authenticated, additional network access is granted.

Solved: VLAN protocol down

Solved: Hi all, On a multilayer switch, my VLANs are down. I have read other posts about what to do but I can't seem to figure it out. I have created VLANs for the interface VLANs but that

Defending Your Network: A Comprehensive Guide to VLAN Hopping

Failure to prevent VLAN hopping can lead to compliance violations and a lack of network resilience. It underscores the need for robust security measures, such as access control lists, port

Troubleshooting Common VLAN and SVI Configuration

This problem is commonly solved by double-checking the access mode VLAN settings on individual ports. Ensure that each port is assigned to the

Switch Port Numbering and VLAN Configuration: What You Need to

Conclusion: Mastering VLAN Configuration for Network Efficiency Mastering the art of VLAN configuration and switch port numbering is a critical skill for any network administrator.

ESXi connecting to physical switch via VLAN access

VLAN Access and Layer 2 switching Physical LAN switch is configured for Virtual LAN (VLAN) segmentation. ESXi/ESX simply connects to a switch port

Network Segmentation and VLAN Best Practices 2026

Comprehensive guide to network segmentation and VLAN design: strategies, implementation, security benefits, and best practices for enterprise networks.

switch port is up, but VLAN interface is down

2, moved the cable to another switch port. 3, tried different vlans and vlan interface, created new, but they all didn't work on whatever the port connecting to the carrier, and they all

Segmenting a Network Using VLANs

Switches with VLAN capability can assign the tagged frames to specific VLANs and therefore set up logically separated networks based on a shared infrastructure.

VLAN How To: Segmenting a small LAN

The goal of this article is to explain and discuss VLANs, including why you should consider using VLANs in a smaller network. I'll also walk through a configuration

Segmenting a Network Using VLANs

h or complete physical network. Unlike the physical separation through the assignment to a switch port, the separation using VLANs logically separates the devices by

How to Create VLAN | Switchport Mode Access

Stands for virtual local area network, but that doesn't really tell us much about it, does it? VLAN Overview We have a need to put subnets into our switched

Network Segmentation

To communicate between VLANs, traffic would need to be explicitly routed between VLANs at Layer 3, using a routing device. Essentially, each VLAN behaved as if it were connected to a dedicated

Switch Port VLAN Assignment (Trunk & Access Ports)

Configuring VLANs (Virtual Local Area Networks) on switch ports is essential for network segmentation and performance. This article explains how to apply

3.0 VLaNs

The role of providing access into a LAN is normally reserved for an access layer switch. A virtual local area network (VLAN) can be created on a Layer 2 switch to reduce the size of broad-cast domains,

Troubleshooting VLAN Connectivity Issues

There can be a few different causes for VLAN connectivity issues: Incorrect configurations of the virtual portgroups and physical switch ports can cause connectivity issues between VLANs. Data path

Virtual LANs (VLANs): Segmenting Your Network

Learn how VLANs can improve your network security and performance by creating logical segments within your physical

Virtual Local Area Networks (VLANs) - Basics about Network Segmentation ...

VLANs, inter-VLAN routing and VLAN Access control lists (ACLs) will work and how you can configure those VLANs on managed layer 3 switches . VLANs NETGEAR MS510TXUP 8-Port

Contact Us

For more information, pricing, or custom solutions, please contact us:

Website: <https://www.buglerdental.co.za>

Email: sales@buglerdental.co.za

Phone: +27 71 549 2836

Address: 22 Impala Crescent, Waterfall Business Estate, Midrand, 1685, South Africa

This document is for informational purposes only. Specifications subject to change without notice.

