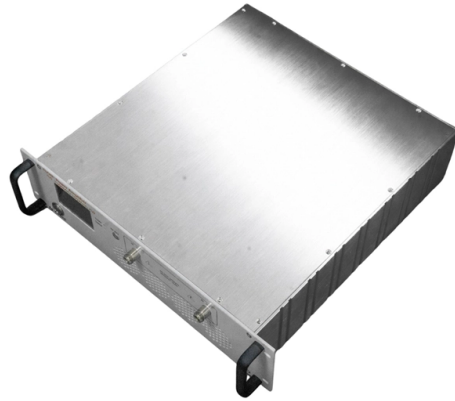


# Primary distribution box connected to transformer



## Overview

Directly connected to the transformer, delivering 0. Generally does not supply power directly to end-use equipment. Equipment inside usually includes isolating switches, circuit breakers, and residual current devices (RCDs). Supplies power to specific buildings or. Primary distribution systems consist of feeders that deliver power from distribution substations to distribution transformers. Many feeders leave substation in a concrete ducts and are routed to a nearby pole. Additionally, the need for redundancy or serviceability without a complete shutdown are also considerations when evaluating various system arrangements. Common in residential, commercial, and industrial areas, it ensures efficient power delivery, overload protection, and voltage conversion within local electrical distribution systems.

## Article Content

The Meaning and Function of Primary, Secondary, and Tertiary ...

The primary distribution box refers to the main distribution box, typically located in the distribution room. These boxes feature bottom entry and exit cables, front-opening doors, and main

The basics of primary distribution circuits (substation

Some distribution primaries are three-wire systems (with no neutral). On these, single-phase loads are connected phase to phase, and single-phase

Distribution Transformer Circuit Diagram

A distribution transformer circuit diagram has three main parts: the primary, secondary, and tertiary circuits. The primary circuit is composed of thick,

System Arrangements

Typical equipment for this system arrangement is a single unit substation consisting of a fused primary switch, a transformer of sufficient size to supply the loads, and a low-voltage switchboard. This

The Functionalities and Features of a Transformer Box

With the growing adoption of renewable energy sources such as solar and wind, electric transformer box also have the capability to integrate these

Three-Phase Transformer Connections

The three phase transformer consist three transformers either separate or combined with one core. The primary and secondary of the transformer can be

Distribution Transformers: Principles Types, and more | TTES

Learn about the different types, parts, and working principles of distribution transformers used for lower voltage

A Simple Guide to Wiring Diagrams for Distribution

The distribution transformer is a key component in the electrical power distribution system. It is responsible for stepping down the high voltage from the transmission

Distribution Automation Handbook

One bay unit includes circuit breaker, disconnect(s), measuring transformers and the local control and interface cabinet in one transportation unit. The unit has been factory-assembled and tested, offering

The Meaning and Function of Primary, Secondary, and Tertiary ...

From the transformer's low-voltage side (0.4kV), power is distributed to a main distribution panel (primary distribution box).

How Do You Wire a Transformer: A Guide to

7.4 Which Side of a Transformer is the Primary? 7.5 How Do You Wire a Single Phase Transformer With a 240V/120V Secondary to an Electrical

Electrical Transformer Box

An electrical transformer box safely houses components that regulate voltage for power distribution. Common in residential, commercial, and industrial areas, it

Wiring A Transformer: Safe And Efficient Connections

Wiring a transformer involves connecting primary and secondary windings to supply voltage and deliver safe electrical output. Proper installation

A Simple Guide to Wiring Diagrams for Distribution

It shows how the primary and secondary windings are connected to the distribution system, as well as the grounding and earthing connections. Connection diagrams

How to connect a voltage transformer? Engineer's Guide

How to connect a voltage transformer? Master engineer-level PT/VT wiring, LOTO protocol, Burden calculation, and Delta-Wye configuration for

Three-Tier Power Distribution System in a Newly Constructed

Main Distribution Board Serves as the primary distribution point for the entire project, directly connected to the transformer providing 0.4kV power. Does not supply power directly to end-use equipment but

Power Transformer Box: A Comprehensive Guide for

Power transformer boxes are protective enclosures that house the core components of a transformer. They provide insulation, cooling, and protection from

Understanding Transformer Box Electrical Components and Functions

The primary role of bushings is to prevent electrical discharges and maintain proper insulation. They provide a barrier between the high-voltage conductors and the grounded metallic

primary distribution system

Secondary voltages are provided by distribution transformers that are connected to the primary system and sized for the voltages required for specific parts of the

The Essential Guide to Understanding Electrical

Learn about the components and layout of an electrical distribution system diagram, including transformers, circuit breakers, and distribution panels.

### Electrical Transformer Boxes Guide: Components

Learn what transformer boxes are, their key parts, pad-mounted vs pole-mounted types, common issues, and safety practices for reliable and safe power distribution.

### Cable Box in Transformers

Despite its modest appearance, its importance in maintaining the transformer's integrity and performance cannot be overstated. Functions of a Cable Box:

Connection Hub: The primary role of a

### Electrical Transformer Box

Primary Function The primary function of an electrical transformer box is to step down high voltages from power lines to lower, safer voltages suitable for

### Distribution Transformer: Parts, Types & Working

Distribution Transformer- Finding a convenient place for installing a distribution transformer is one of the main problems faced by the designers.

How primary feeder, distribution transformer, fuses and

Preventing an interruption of service As we already know, distribution transformers step down from the distribution or primary feeder voltage to the

### Single Phase Transformer Connections For AC Systems

Single phase transformer connections support safe voltage changes in AC systems, using series or parallel wiring, proper polarity, and load matching to maintain

### Distribution Transformer: A comprehensive guide

Distribution Transformer: A comprehensive guide What is a Distribution Transformer? A distribution transformer provides the final voltage

### Electric Transformer Boxes: Design and Application Considerations

Summary Electric transformer boxes are essential components in electrical systems, providing voltage transformation and ensuring the safe and efficient distribution of electrical power.

## Contact Us

For more information, pricing, or custom solutions, please contact us:

Website: <https://www.buglerdental.co.za>

Email: [sales@buglerdental.co.za](mailto:sales@buglerdental.co.za)

Phone: +27 71 549 2836

Address: 22 Impala Crescent, Waterfall Business Estate, Midrand, 1685, South Africa

This document is for informational purposes only. Specifications subject to change without notice.

