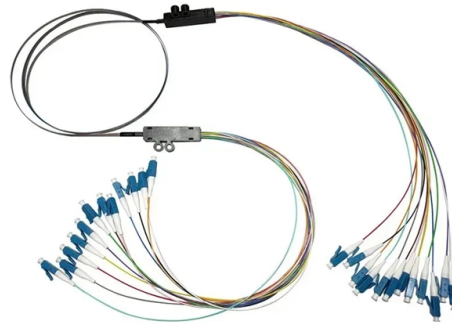


Swiss Maintenance Optical Line Terminal 100G



Overview

GP5810-08 OLT is a highly integrated, large-capacity XG (S)-PON OLT for operators, ISPs, enterprises, and campus applications. The product follows the ITU-T G. 988 technical standard, and can be compatible with three modes of G/XG/XGS at the same time. Optical Line Terminals-PON Networks-WDM, OTN & PON - FS.com Europe FS Germany Free delivery on orders over EUR 79 (Excl. VAT) Germany Home WDM, OTN & PON PON Networks. At the heart of a point-to-multi-point or passive optical network (PON) is the optical line terminal (OLT). Modern OLTs offer communication service providers (CSP) the ability to launch multigigabit services to tens of thousands of subscribers from a single location or just ten. Fiber-to-the-home. COMPLIANT WITH THE SFF-8636, IEEE802. 1 Amphenol's 100G QSFP28 optical modules include SR4, AOC, AOC break out, CWDM4, LR4, ER4 Lite, ER4 and ZR4 series, which adopt LC or MPO optical ports and are compatible with IEEE802. 3bm, SFF-8636 and other standards; With low power. Precision's industry-standard 100G quad small form-factor pluggable (QSFP28) optics are hot-swappable input/output modules for use throughout various data communication applications. The modules offer full MSA compliance and support 100G data transmissions with low power consumption and. Eoptolink's single lambda QSFP28 are used for 100G Ethernet application in Data Centers, High-speed interconnects within and between switches, routers and transport equipment, Server-Server Clusters, Super-computing interconnections.

Article Content

100G QSFP28 Transceiver Modules | Optical

FS offers a growing portfolio of 100G QSFP28 modules. The 100G QSFP28 module solution provides high-performance 100GbE connectivity for data centres,

Optical Line Terminal Equipment User Manual

This document is a user manual for the Optical Line Terminal Equipment Element Management System. It provides instructions and information on how to install, configure, and manage the system.

Nokia 7220 IXR-H series

It supports a wide range of optics — including 800G OSFP, 800G QSFP-DD, 400G QSFP-DD, 100G QSFP28, 25G SFP28 and 10G SFP+ —with flexible optical breakouts for intra-fabric and workload

Optical Link - the optical transport network for data | Swisscom

Swisscom Opticallink Services, your optical transport network in the gigabit range. Ideal for large data volumes and time-critical applications.

ITU-T Rec. G.9807.2 (08/2017) 10 Gigabit-capable passive optical ...

Recommendation ITU-T G.9807.2 outlines the architecture and interface parameters for 10 gigabit-capable symmetric passive optical network (XG(S)-PON) systems with extended reach using a

Low-cost 100 G PON based on a residual optical carrier

We experimentally demonstrate a cost-effective dual-polarization quadrature phase shift keying (DP-QPSK) coherent passive optical network

100Gb/s QSFP28 Transceivers | Optical Interconnect

Amphenol's 100G QSFP28 optical modules include SR4, AOC, AOC break out, CWDM4, LR4, ER4 Lite, ER4 and ZR4 series, which adopt LC or MPO

Optical line terminals

Our SDX 6000 Series of software-defined optical line terminals (OLTs) consists of open and disaggregated access devices that support a broad range of PON

ITU-T Rec. Technical Paper (04/2021) LSTP-GLSR Guide on the use

Characteristics and test methods of optical fibres and cables, and installation guidance (Question 5/15), Characteristics of optical components, subsystems and systems for optical transport networks

TF-G8000C GPON Optical Line Terminal

TF-G8000C GPON Optical Line Terminal The TF-G8000C is a high-density 1U box GPON OLT. It uses the industry-leading Broadcom commercial chip to fully support the ITU-T G.988 GPON technology

GIGALIGHT 100G CFP DCO Optical Transponder

Regulatory Compliance Gigalight 100G CFP DCO transponders are Class 1 Laser Products. They are certified per the following standards:

SWISS optio terminal unit

The terminal unit has a shut-off valve that allows the gas supply to be completely interrupted without having to shut off the supply line. An easy-to-replace sealing unit guarantees cost-effective and quick

100G QSFP28 Single Lambda

Eoptolink's EOLQ-131HG-O-10 QSFP28 LR 100G Optical transceiver module are designed for use in 100 Gigabit Ethernet links over 10km single mode fiber. They

ITU-T Rec. L.25 (01/2015) Optical fibre cable network maintenance

Summary Recommendation ITU-T L.25 deals with general features in relation to the maintenance and operation of optical fibre cable networks. This is the latest revision of a Recommendation that was

Optical Link - the optical transport network for data | Swisscom

The optical link ensures maximum data availability, making it ideal for transferring large amounts of data to the cloud, to your own data centres and between your company locations.

Optical Line Terminal: The Backbone of Fiber Optic

Learn about the importance of Optical Line Terminals in fiber optic networks and how they enable high-speed, reliable connectivity for users worldwide.

16-Port GPON/XGSPON Combo Optical Line Terminal

GP5810-16 is a high-capacity XG(S)-PON OLT with 16 combo PON ports supporting GPON, XGPON, and XGSPON. FTTH, ISP, enterprise network.

SWISS optio terminal unit AGSS

The extraction is carried out using a hose which is connected via a connector (1L) corresponding to the EN ISO 9170-2 standard to the AGSS terminal unit. By coupling the hose, the AGSS terminal unit will

In-Service Line Monitoring for Passive Optical Networks

When we monitor an optical fiber network, the network configuration is a critical factor as regards the monitoring method. Passive optical networks (PONs) provide the main FTTH service based on GE

Microsoft Word

By coupling the hose, the AGSS terminal unit will be put into operation. An optical operating indicator (green light) indicates operation of the AGSS terminal unit. The terminal unit AGSS is for assembling

Maintenance of Access Network Optical Fibers

A Passive Optical Network (PON) system is the most efficient method for providing broadband transmissions over an access network. In this method, an Optical Line Terminal (OLT) in the Central

QSFP28 Standard

Designed with cost-effectiveness and network provider needs in mind, Precision OT's diverse line of 100G QSFP28 modules enables up to 112G speeds at distances

SWISS optio terminal units DIN

The terminal unit DIN has a shut-off valve which fully stops the gas supply without the feed pipe having to be shut off. An easy-to-replace sealing unit guarantees affordable and fast maintenance work.

Optical Line Terminals-PON Networks-WDM, OTN & PON

FS provides Optical Line Terminals (Free & Fast Delivery, Expert Tech Support, Outstanding Warranties).

Optical Line Terminal | GPON & XG-PON OLT

PN8600-G series GPON OLTs support a variety of network construction modes including FTTH, FTTB, and FTTC to meet various business scenarios such as home access and enterprise access. A

Optical Line Terminal Equipment Element Management System

Multi-point control protocol Operation, Administration & Maintenance Optical Distribution Network Optical Line Terminal Optical Modulation Amplitude Optical Network Terminal Optical Network Unit

XGSPON COMBO OLT 8PON Optical Line Terminal

GP5810-08 OLT is a highly integrated, large-capacity XG (S)-PON OLT for operators, ISPs, enterprises, and campus applications. The product follows the

What Is a 100G SFP-DD LR Optical Transceiver?

This article introduces the 100G SFP-DD LR optical module, highlighting its key benefits for high-speed, long-distance data transmission in

Datasheet-DS-P8000-X2

The DS-P8000-X2 is a DeltaStream Chassis Optical Line Terminal with full L2 and advanced L3 features designed to meet a wide range of business needs. The chassis OLT supports

Optical Line Terminal (OLT)

Cortina family of Optical Line Terminal (OLT) SoCs completes the end-to-end solutions for EPON and 10G-EPON applications. Our silicon devices have been

Contact Us

For more information, pricing, or custom solutions, please contact us:

Website: <https://www.buglerdental.co.za>

Email: sales@buglerdental.co.za

Phone: +27 71 549 2836

Address: 22 Impala Crescent, Waterfall Business Estate, Midrand, 1685, South Africa

This document is for informational purposes only. Specifications subject to change without notice.

