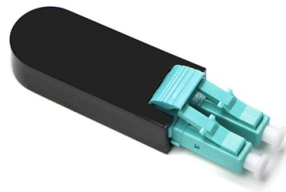


Waterproofing requirements for distribution box outlets



Overview

Waterproof distribution box manufacturers tell you that the way to waterproof an outdoor distribution box is to first choose a distribution box made of waterproof material, seal the cable entry points, apply silicone sealant, install a weatherproof cover, use. Waterproof distribution box manufacturers tell you that the way to waterproof an outdoor distribution box is to first choose a distribution box made of waterproof material, seal the cable entry points, apply silicone sealant, install a weatherproof cover, use. Choosing the most ideal levels of waterproof for distribution boxes is critical to ensure the reliability and safety of your operations. Via these enclosures, you're able to protect the most sensitive electrical components from eco-hazards, such as humidity, water jets, and dust, which your. Selecting and installing the right protective enclosure ensures long-term electrical safety in demanding environments. This guide primarily analyzes structural engineering characteristics. (1) Waterproof distribution box engineered for harsh outdoor and industrial environments, providing IP65–IP68 sealing against dust, rain, and UV. It also protects them from other bad weather. This kind of box keeps wires, switches, and outlets safe. It helps you avoid short circuits or electrical fires.

Article Content

Technical Requirements For The Design And Testing Of

High-grade waterproof distribution boxes must pass numerous rigorous tests, including high-pressure water spray, immersion, vibration, and

Technical Requirements for Distribution Box in Electrical Industry

16. The distribution box system drawings are shown in the attached drawings. The above is the technical requirements of distribution box. On the premise of ensuring safety, the distribution box is still

Waterproof distribution box manufacturer tells you, How do you ...

Waterproofing of outdoor electrical boxes is critical to protecting electrical components from moisture and ensuring safety. Here is a step-by-step guide on how to waterproof an outdoor

Safety requirements for distribution box

4□ All kinds of electrical components and leakage protectors used in distribution boxes at all levels shall meet the quality requirements of national standards. 5□ The leakage protectors in distribution boxes

Waterproof Distribution Box | IP65 & IP66 Rated

ZCEBOX manufactures IP65 & IP66 waterproof distribution boxes for outdoor and industrial applications. Built with durable materials, CE & ROHS certified. Contact

NEC Code for Outdoor Receptacle Installation (NEC 406.9)

Learn the NEC requirements for installing outdoor receptacles, including rules for GFCI protection, location, and the use of weatherproof "in-use" covers per NEC

Cautions and Requirements for Installation of

Distribution box is a low-voltage distribution device which assembles switchgear, measuring instruments, protective appliances and auxiliary equipment in a closed

Requirements Of Waterproof Distribution Box Designed By

The waterproof door and box are made of cold rolled steel plate, and they are fully enclosed structure, and are also equipped with sealing rubber strip and waterproof groove, which

What is a waterproof outdoor distribution box

Always check for clear IP ratings, such as IP65 or IP67, to make sure the box is waterproof. Tip: A box with multiple threaded outlets gives you more ways to connect your devices.

Installation requirements for distribution boxes

Distribution boxes shall be made of non-combustible materials; open distribution boards may be installed in production places and offices with low electric shock risk; enclosed cabinets shall

The Role and Application of Distribution Box Waterproof Enclosures

Outdoor Application: A municipal project required outdoor distribution boxes that are waterproof, dustproof, and resistant to temperature changes. By customizing weather-resistant waterproof

Installing Weatherproof Outlets in Your Backyard

Weatherproof outlets are designed to withstand these conditions, ensuring safety and functionality year-round. In this article, we will walk you through the essentials of installing

Safety requirements of distribution box

The distribution box has the characteristics of small size, simple installation, special technical performance, fixed location, unique configuration function, not limited by

Detailed introduction of safety requirements for distribution box

Safety control requirements for distribution box: 1. The low-voltage power supply system at the construction site shall be equipped with a general distribution box, a distribution box and a

Waterproof Distribution Box | IP65 Plastic DIN Rail

Each enclosure delivers dependable IP65–IP68 sealing for outdoor and industrial use, with options for plastic waterproof distribution box housings and DIN rail

how to install a waterproof electrical box

1. Select the appropriate power distribution box: Select the appropriate box model and specifications based on the project requirements and

Waterproof Distribution Box Installation And Engineering Structure ...

A robust waterproof distribution box shields sensitive components from moisture, dust, and mechanical impacts. This guide primarily analyzes structural engineering characteristics,

The installation requirements for the distribution box

Learn how to install a distribution box safely and correctly. Covers wiring, placement, standards, and expert tips for a compliant setup.

Key Steps When Choosing the Right Waterproof Level

Learn how to choose the right waterproof level for distribution boxes. Follow 8 key steps and explore IP65+ solutions from trusted manufacturer

Waterproof Distribution Box (IP65–IP68)

Explore our curated selection of waterproof distribution box models from the AT and HT series. Each enclosure delivers dependable IP65–IP68 sealing for outdoor

Discover Europe's digital cultural heritage | Europeana

Hier sollte eine Beschreibung angezeigt werden, diese Seite lässt dies jedoch nicht zu.

How To Keep Your Outdoor Electrical Box Waterproof

4. Do I need to cover my outdoor electrical box during a rainstorm? Although covering your outdoor electrical box during a rainstorm may offer a

Outdoor Electrical Distribution Box Specifications: NEC

Complete specification guide for outdoor electrical distribution boxes covering NEC Article 312 requirements, NEMA ratings, sizing calculations, and

Technical Requirements For The Design And Testing Of

Through this detailed design, the waterproof outdoor electrical box can maintain long-term stable operation even under higher protection ratings.

46 CFR § 111.81-1

§ 111.81-1 Outlet boxes and junction boxes; general. (a) The requirements of this subpart apply to each outlet box used with a lighting fixture, wiring device, or similar item, including each separately

The Complete Guide to Distribution Box: Installation, Types & More

Calculate the total electrical load and add 25% for future growth. Consider physical space requirements and accessibility needs when selecting enclosure size. What's the difference between

Contact Us

For more information, pricing, or custom solutions, please contact us:

Website: <https://www.buglerdental.co.za>

Email: sales@buglerdental.co.za

Phone: +27 71 549 2836

Address: 22 Impala Crescent, Waterfall Business Estate, Midrand, 1685, South Africa

This document is for informational purposes only. Specifications subject to change without notice.

