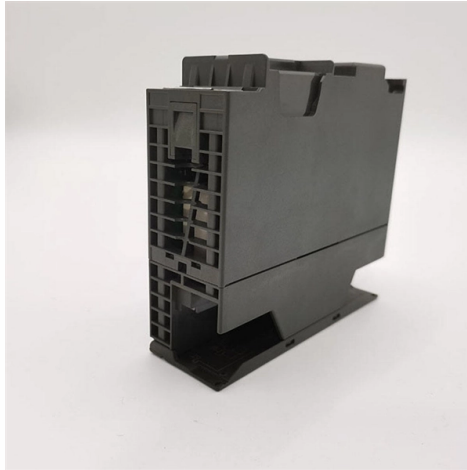


# What does DC power supply cabinet mean



## Overview

DC power supply cabinet is designed to supply consumers with direct current and serves as uninterrupted power supply source for 220 V DC and 24 V DC circuits. DC power supply cabinet is referred to as DC cabinet, its role to provide stable DC power supply to power-using equipment, a power distribution equipment, as the operating power supply and signal alarm, for the larger and more complex high and low voltage distribution system to provide a stable. A DC power supply is an essential electronic instrument that converts alternating current (AC) from standard wall outlets into stable direct current (DC). This steady DC voltage is indispensable for reliably powering everything from basic electronic components and prototypes to complex industrial. A power distribution cabinet is a critical part of modern electrical systems. Simply put, a distribution cabinet is an enclosure that contains circuit breakers, relays. What is energy storage container?

SCU uses standard battery modules, PCS modules, BMS, EMS, and other systems to form standard containers to build large-scale grid-side energy storage projects. Unlike AC power sources, DC power supplies deliver.

## Article Content

### 2. DC Power Supply Cabinet

DC power supply cabinet is designed to supply consumers with direct current and serves as uninterrupted power supply source for 220 V DC and 24 V DC circuits.

What is a DC Power Supply?

What is a DC Power Supply? A DC power supply is an essential electronic instrument that converts alternating current (AC) from standard wall

Understanding AC/DC Power Supply | Article | MPS

An AC/DC power supply transforms AC into a stable DC voltage. Single-phase AC/DC systems are simpler, but three-phase AC/DC systems deliver more power

APS\_DC\_Cabinets\_Datasheet

All cabinets are made using 15kW or 30kW master DC supply or Load and parallel connected 15kW or 30kW slave units. The masters controls the entire system for ease of operation.

What is a DC Power Supply?

What is a DC power supply? Learn how it works, key types, specs, and tips for choosing, using, and troubleshooting power supplies in real-world

The role and characteristics of DC cabinets

5, high-voltage switch control coil, that is, high-voltage switching power supply control; 6, secondary line relay protection. DC cabinet features: 1,

the cabinet PDU work

The rack PDU manages and distributes power, and is usually installed directly on the rack, taking power from the rack power supply (branch circuit), and

What is a DC energy storage cabinet | NenPower

A DC energy storage cabinet can mitigate disruptions caused by fluctuations in power generation, providing essential support during peak demand

DC power supply cabinet working principle and role

Working principle: DC screen power operation power supply system consists of AC power distribution part, rectifier part, DC feeder part and

What components are inside a power distribution cabinet

Power distribution cabinet (PDC) is an essential part of electrical systems, used to distribute electrical power to various circuits within a building or

## Essential Components of UPS Cabinets

UPS cabinets, which house these crucial systems, ensure a continuous power supply even during power outages or fluctuations. A UPS

### DC Power Supply: A Complete Guide

Learn what a DC power supply is, its components, and types. Discover how it functions to power your devices reliably. Read the full guide here.

### Unlocking the Power of DC: A Comprehensive Guide to How a DC Power ...

A DC power supply is an electronic device that supplies electric power to electrical loads. The primary function of a DC power supply is to convert the AC voltage from the mains to a stable DC voltage

### Cabinet safety and enclosure

After completing this module, you will be aware of issues affecting the safety of cabinet design and assembly, know what serviceability means and be aware of the issues affecting the selection of the

### Components of a Control Cabinet

The PDS, transfer power to all components that require AC power. Power Supplies convert AC to DC voltage, which is required for the performance

### Power Distribution Cabinet: The Backbone of Efficient Electrical ...

They provide an efficient means to manage the electrical flow within the power distribution cabinet. Circuit Breakers: Circuit breakers are critical safety devices that serve to

### DC POWER SUPPLY CABINET WORKING PRINCIPLE AND ROLE

EIEI POWER specializes in solar inverters, photovoltaic inverters, energy storage systems, storage containers, battery cabinets, solar cells, lithium batteries, and photovoltaic solutions for Polish and

### Applications, Types, and Basics of DC Power Supply

DC/DC power supplies, known as DC/DC converters, are power supplies that convert a DC voltage of a certain magnitude to one of a different magnitude to

### Understanding the Essentials of Low Voltage

Low voltage distribution cabinets are a critical component of modern electrical systems, ensuring the safe and efficient distribution of power across

### Power Supply Cabinet

Power supply cabinets in this area regularly provide vital energy to communication networks and equipment. The cabinets work on direct current, making them ideal for maintaining the uninterrupted

## Everything You Need to Know About Data Center Power

In this article, we will examine all of the important power terminology and calculations that you need to know before starting your colocation project.

### APS\_DC\_Cabinets\_Datasheet

Custom combinations of both DC power supply and regenerative DC load or multiple voltage range combinations per cabinet are available upon request. Up to 13 cabinets can be paralleled to create

lkpwebster

Hier sollte eine Beschreibung angezeigt werden, diese Seite lässt dies jedoch nicht zu.

## DC POWER SUPPLY CABINET WORKING PRINCIPLE AND ROLE

On the construction site, there is no grid power, and the mobile energy storage is used for power supply. During a power outage, stored electricity can be used to continue operations without interruptions..

## Power Distribution Cabinet - Types, Functions & Uses

Simply put, a distribution cabinet is an enclosure that contains circuit breakers, relays, busbars, and monitoring devices. It ensures that electricity is

### Detailed Explanation of the Composition and Function of Various ...

The power supply system is used to step down the high voltage through the transformer to the voltage level required by the user, and is equipped with an indoor integrated system that

## What is a DC Power Supply? Full Electronics Guide

A DC power supply is an electrical device that converts alternating current (AC) from the mains into regulated direct current

## AC vs. DC Power Supplies: Key Differences

Discover the key differences between AC and DC power supplies and understand their roles in powering electronic devices effectively. Learn more!

## Choosing the Right Power Distribution Cabinet for Your Electrical Needs

Discover the importance of selecting the right power distribution cabinet for system reliability, efficiency, and compliance with industry standards. Learn about critical features, material

## Contact Us

For more information, pricing, or custom solutions, please contact us:

Website: <https://www.buglerdental.co.za>

Email: [sales@buglerdental.co.za](mailto:sales@buglerdental.co.za)

Phone: +27 71 549 2836

Address: 22 Impala Crescent, Waterfall Business Estate, Midrand, 1685, South Africa

This document is for informational purposes only. Specifications subject to change without notice.

