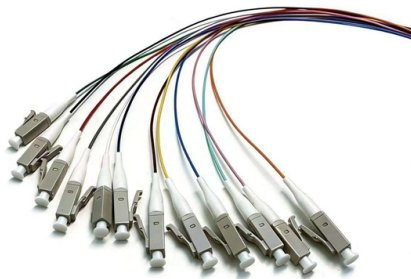


# Wss optical module



## Overview

Wavelength Selective Switches (WSS) provide agility in optical networks via their ability to reconfigure traffic and enable bandwidth sharing at the optical layer. Molex offers WSS products in Single- and Twin- formats, with port counts ranging from Single 1x2 to Twin 1x32+ products. Molex offers. With almost all new system deployments leveraging ROADM-based AON networks, Manufacturing Test and Component engineers are reviewing their needs and strategies for DWDM module testing—something they have not had to do for a long time. Let's delve deeper into WSS and explore its importance in optical. In the realm of optical networking, the Wavelength Selective Switch (WSS) stands as a critical enabler of dynamic wavelength management, offering unprecedented flexibility and adaptability in the routing of optical signals.

## Article Content

Optical Modules Market Research Report 2034

Optical Modules Market Outlook 2025-2034 The global optical modules market was valued at \$14.8 billion in 2025 and is projected to reach \$39.6 billion by 2034,

TrueFlex Twin High Port Count Wavelength Selective

The TrueFlex® Twin WSS enables the introduction of colorless and directionless wavelength add/drop at optical network nodes. This minimizes provisioning

Top Wavelength Selective Switch WSS Modules Market Companies

Overview: Fujitsu Optical Components (FOC) is a Japanese photonics specialist and a key regional player among Wavelength Selective Switch WSS Modules market companies, particularly strong in

Global AI Optical Transceiver Market to Reach US\$26 Billion in 2026 ...

TrendForce's latest research indicates that the global market for AI-focused optical transceivers has entered a phase of rapid growth, with market size projected to expand from

800GbE optics shipments to grow 60% in 2025 - report

Telecom component revenue will rebound in 2025, with continued growth from 400ZR coherent optics coupling with accelerating sales of the latest

A Brief Introduction to Wavelength Selective Switch

WSS is an essential component in wavelength division multiplexing (WDM) optical networks, enabling the routing of signals based on wavelength. It

Over 20 Million 400G & 800G Datacom Optical Module

BOSTON (January 7, 2025) - Total shipments of leading-edge datacom optical modules are projected to tally over \$9 billion for 2024, according to the latest

ROADM and Wavelength Selective Switches

Wavelength Selective Switches (WSS) are a critical enabler of Reconfigurable Optical Add-Drop Multiplexers (ROADMs)— the heart of these systems. Manufacturing test engineers across the

Optical Module Stocks Surge Over 6% as 1.6T Era Begins

Driven by accelerating AI infrastructure demand, key optical module stocks like InnoLight and Eoptolink surged after a Huatai Securities report confirmed 1.6T modules have entered

huawei+optical+module+supplier+list

21 Companies and suppliers for huawei+optical+module+supplier+list Find wholesalers and contact them directly Leading B2B marketplace Find companies now!

OFC 2026 - Scaling Up Optical Network Density

OFC 2026 was held a couple of weeks ago, and since then, I have had a chance to reflect on what was shown and what I saw from the perspective of an Optical Transport industry analyst. The simple

GlobalFoundries Accelerates Adoption of Co-Packaged Optics for

GlobalFoundries today announced the introduction of its SCALE optical module solution for co-packaged optics (CPO). GF's SCALE solution, or Silicon photonics Co-packaged Advanced

Global Leader in Materials, Networking, and Lasers

Learn how Coherent empowers innovations and breakthrough technologies for the industrial, communications, electronics, and instrumentation markets.

GlobalFoundries accelerates adoption of co-packaged optics for

GlobalFoundries accelerates adoption of co-packaged optics for advanced AI data centers with SCALE optical module solution PRESS RELEASE GlobeNewswire May. 4, 2026, 08:30

Chinese Funds Lift Investment in Optical Module Stocks Amid AI

Zhongji Innolight, a core investment target among the optical module concept stocks, has become the top stock heavily held by public funds, while Eoptolink Technology and Dongshan

Wavelength Selective Switch (WSS) Solutions - InLC

High-Performance WSS for ROADM & Optical Circuit Switching. InLC's WSSs feature the industry's lowest power consumption, very fast response time and

Lumentum shows AI data center optics at OFC 2026 | LITE Stock News

The Quad integrated C+L band 3x33 WSS module is targeted for multi-rail terminal WSS applications and is a proof-of-concept design that can be rapidly brought into production. Multi-rail

Overview of Common Wavelength Selective Switch (WSS) Module

Wavelength Selective Switch (WSS) is a critical component in optical communication systems, enabling wavelength selection and routing in Wavelength Division Multiplexing (WDM)

What is WSS and How it works?

WSS technology enables network operators to remotely adjust, add, or drop specific wavelengths of light without disrupting other traffic within the network. The Wavelength Selective

Datacom Transceivers Now, Next, and Beyond

PLUGGABLE OPTICAL LINE SUBSYSTEM (POLLS) Bi-directional, dual erbium-doped fiber amplifier (EDFA) in QSFP pluggable module Booster amplifier for transmit direction Pre-amplifier for receive

Wavelength Selective Switches (WSS) / Optical Circuit

This allows for a greater number of optical channels and higher data transmission bandwidth within the same footprint, while ensuring high-precision light guidance

Wavelength Selective Switch (WSS) Modules

Wavelength Selective Switches (WSS) provide agility in optical networks via their ability to reconfigure traffic and enable bandwidth sharing at the optical layer.

Single WSS | Finisar WSS

By integrating two WSS, each featuring superior optical performance, in a single module the dual WSS modules by Finisar are optimized for this new generation of

Optical Module Supply Chain Financial Data Tracking · Issue 1, May

Optical Module Supply Chain Financial Data Tracking · Issue 1, May 2026 This week covers the disclosure window from late April to early May. Core signals indicate that leading

## Contact Us

For more information, pricing, or custom solutions, please contact us:

Website: <https://www.buglerdental.co.za>

Email: [sales@buglerdental.co.za](mailto:sales@buglerdental.co.za)

Phone: +27 71 549 2836

Address: 22 Impala Crescent, Waterfall Business Estate, Midrand, 1685, South Africa

This document is for informational purposes only. Specifications subject to change without notice.

